



# RACINE COUNTY MULTI-JURISDICTIONAL COMPREHENSIVE PLAN FACT SHEET

## Inventory of Existing Land Uses and Transportation Facilities & Services (Multi-Jurisdictional Comprehensive Plan Preliminary Draft Chapter IV)

### Existing Land Uses

#### Urban Land Uses: 2000

50,345 acres (about 23% of Racine County) were developed with urban land uses. Of these uses:

23,450 acres (46% of all urban land in the County) were residential.

- 13,350 acres (27%) were transportation, communication and utilities.
- 3,000 acres (6%) were intensive recreational
- 2,430 acres (5%) were industrial.
- 2,280 acres (4%) were governmental and institutional.
- 1,930 acres (4%) were commercial land.
- 3,900 acres (8%) were unused urban land.

Between 1963 and 2000, the amount of land used for urban uses increased by 20,800 acres, or approximately 70%.

In that time period, 13 municipalities experienced over 75% increase in urban land use; 4 municipalities experienced an increase of over 100%.

#### Residential Development

Between 2000 and 2005, residential development included 99 residential subdivision and condominium plats, which created 3,264 residential lots on 2,864 acres.

#### Industrial & Business Park Development

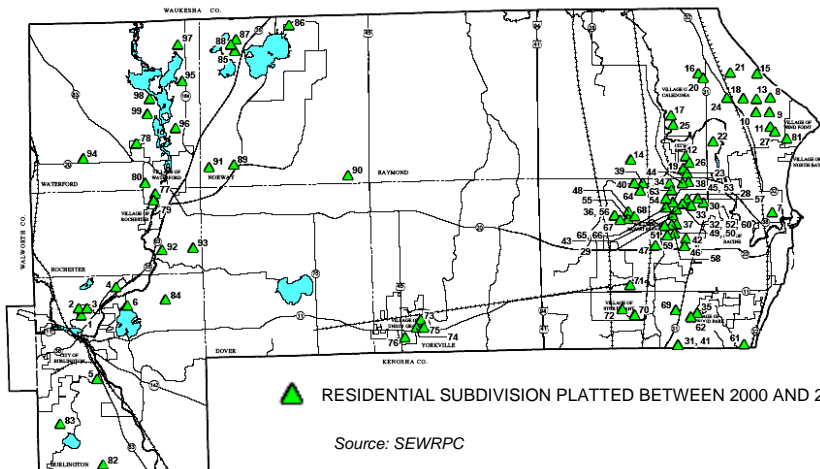
In 2005, there were a total of 19 industrial and business parks encompassing 2,100 gross acres. Of these, 15 had available sanitary sewer service.

EXISTING LAND USE IN THE RACINE COUNTY PLANNING AREA: 2000

LAND USE CATEGORY	ACRES	% OF URBAN/ NONURBAN	% OF TOTAL
<b>Urban</b>			
<b>Residential</b>			
Single-Family	21,900	43.5	10.0
Multi-Family	1,547	3.1	0.7
Subtotal	23,447	46.6	10.7
Commercial	1,929	3.8	0.9
Industrial	2,429	4.8	1.1
<b>Transportation, Communication &amp; Utilities</b>			
Streets & Highways	11,399	22.7	5.2
Railroads	866	1.7	0.4
Other	1,088	2.2	0.5
Subtotal	13,353	26.6	6.1
Governmental & Institutional	2,278	4.5	1.0
Recreational	3,008	6.0	1.4
Unused Urban	3,901	7.7	1.8
<b>URBAN SUBTOTAL</b>	<b>50,345</b>	<b>100.00</b>	<b>23.0</b>
<b>Nonurban</b>			
<b>Natural Areas</b>			
Surface Water	5,201	3.1	2.4
Wetlands	15,885	9.5	7.3
Woodlands	12,679	7.6	5.8
Subtotal	33,765	20.2	15.5
Extractive and Landfill	1,619	1.0	0.7
Agricultural	125,185	74.5	57.5
Unused Rural	7,136	4.3	3.3
<b>NONURBAN SUBTOTAL</b>	<b>167,705</b>	<b>100.00</b>	<b>77.0</b>
<b>TOTAL</b>	<b>218,050</b>	<b>—</b>	<b>100.0</b>

Source: SEWRPC

RESIDENTIAL SUBDIVISIONS PLATTED IN THE RACINE COUNTY PLANNING AREA: 2000-2005



Source: SEWRPC

# LAND USES

## Nonurban Land Uses: 2000

167,700 acres (about 77% of the County) were in agricultural or nonurban uses, including:

- 125,200 acres (75% of all nonurban land) agricultural
- 33,800 acres (20%) natural resource areas
- 8,700 acres (5%) extractive, landfill and unused lands

Between 1963 and 2000, the percentage of land classified as “nonurban” decreased by about 11% (20,800 acres).

# TRANSPORTATION FACILITIES & SERVICES

## Streets and Highways

In 2005, there were 435 miles of arterial streets and highways in Racine County. (Arterial streets and highways provide a high degree of mobility, serving through-movement of traffic between and through urban areas.)

## Bicycle and Pedestrian Facilities

Racine County has developed 4 off-street bike paths within former electric interurban railway rights-of-way: the Burlington Trail, the Milwaukee-Racine-Kenosha (WRK) Trail, the North Shore Trail and the Waterford-Wind Lake Trail. SEWRPC is currently updating information about bicycle facilities in the County.

There has not been a comprehensive inventory of pedestrian facilities in Racine County.

## Interregional Public Transportation

### Passenger Rail Service

Intercity passenger rail service is provided by Amtrak. The Amtrak Station is located in the Village of Sturtevant. There are no service stops in the City of Racine Central Business District (CBD).

- Hiawatha route provides service between Milwaukee and Chicago (7 round trips, Monday through Saturday; 6 on Sunday)
- Empire Builder provides 1 daily round trip between Chicago, Milwaukee, Minneapolis-St. Paul and Seattle.

### Bus Service

The Kenosha-Racine-Milwaukee Commuter bus is provided by Wisconsin Coach Lines/Coach USA. Service includes:

- Fixed-route express transit service between the Cities of Milwaukee, Racine and Kenosha; 2 alignment routes through Racine County
- Airport Express route provides service over I-94 between downtown Milwaukee and Chicago's O'Hare and Midway Airports, with a stop at General Mitchell International Airport.

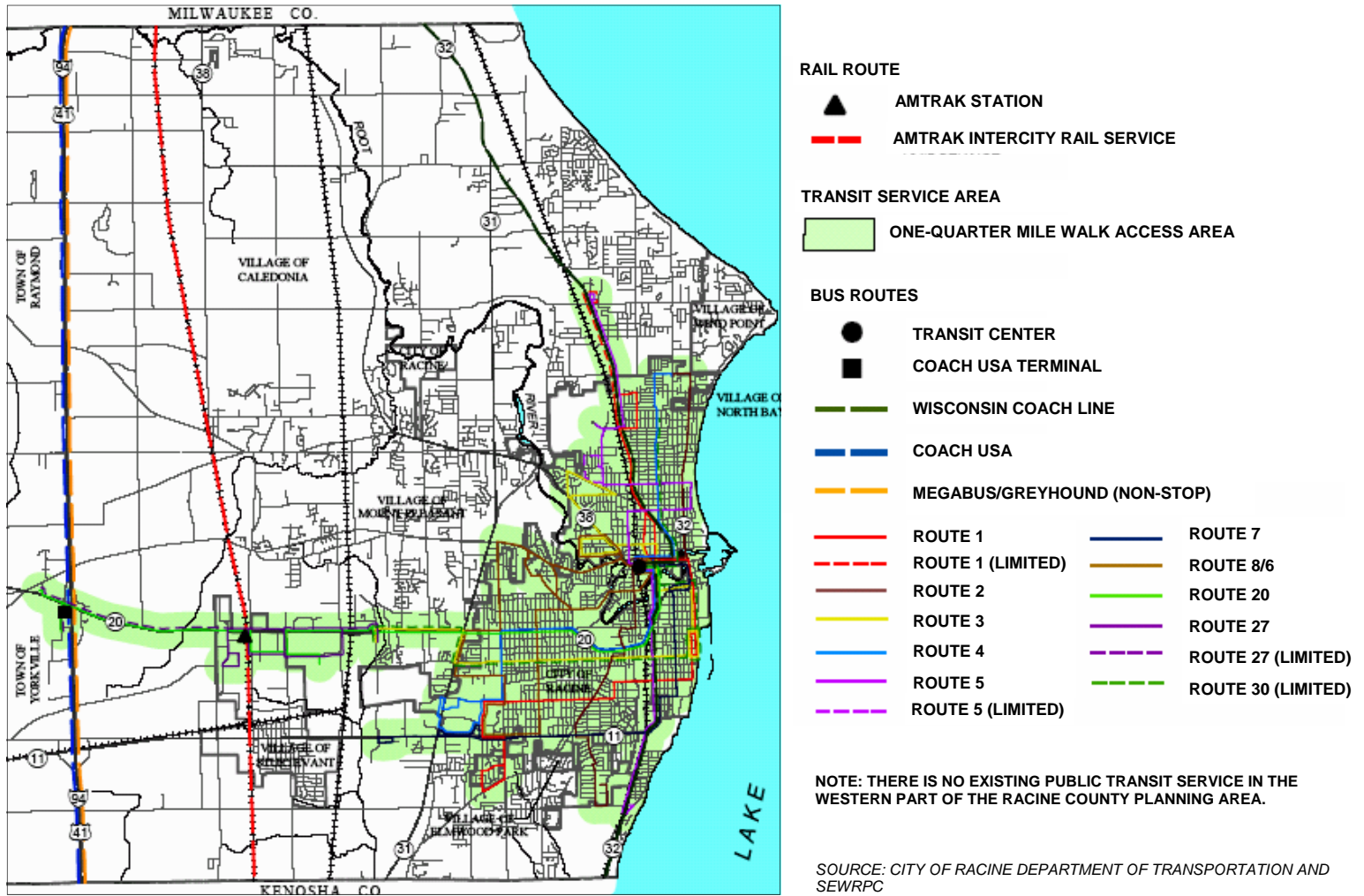
### Scheduled Air Carrier Service

Air carrier service is provided by Milwaukee General Mitchell International Airport. 13 airlines offer over 450 scheduled daily flights between Milwaukee and 90 other cities and metropolitan areas.

### Ferry Service

In 2007, passenger and car ferry services were provided across Lake Michigan, between Milwaukee and Muskegon, Michigan by Lake Express, LLC. Services included 3 round trips daily in the spring and summer; 2 round trips daily in the fall.

## PUBLIC TRANSIT SERVICE IN THE RACINE COUNTY PLANNING AREA: 2006



### Urban Public Transportation

#### Local Transit System

Belle Urban Service (BUS) provides local public transit in the City of Racine and its immediate vicinity. There are 9 fixed routes, including 7 regular routes operating largely within the City.

- 7 routes radiate outward from the downtown area.
- 2 routes extend beyond the City, including 1 to a shopping center in the Village of Caledonia
- 2 routes provide service to major employment centers in the Village of Mt. Pleasant and the Town of Yorkville.
- Services are provided on weekdays from 5:30AM—midnight; on Saturdays from 7:00AM—10:30PM; and on Sundays from 9:30AM—7:00PM.
- Adult cash fare is \$1.50 per trip.
- Between Memorial Day and Labor Day, BUS also offers “trolley” service (a bus designed to resemble a trolley) in the downtown area. Services are provided Tuesday through Sunday, 10:00 AM—4:00PM and from 4:00PM to midnight on Fridays and Saturdays. Fare is \$0.25 per trip.

#### Specialized Transportation Services

Racine County Human Services Department administers 2 major programs that provide door-to-door transportation services throughout Racine County:

- advanced reservation services to elderly persons and people with disabilities for general travel;
- fixed-route, fixed-schedule transportation to persons with developmental disabilities who are participating in training and employment programs

Medical-purpose trips are provided by Lakeshore Counties Chapter of the American Red Cross (non-profit), and K&S Medical Transport and Laidlaw Transit, Inc. (for-profit),

# TRANSPORTATION FACILITIES & SERVICES

## Park-Ride

In 2007, there are two public and one private park-ride facilities in Racine County.

## Rail Freight

In 2006, three railway companies provided railway freight service within Racine County:

- Union Pacific Railroad
- Canadian Pacific Railway
- Canadian National Railway

## Airports and Heliports

In 2006, there were 15 airports/heliports in Racine County, all of which serve general aviation needs:

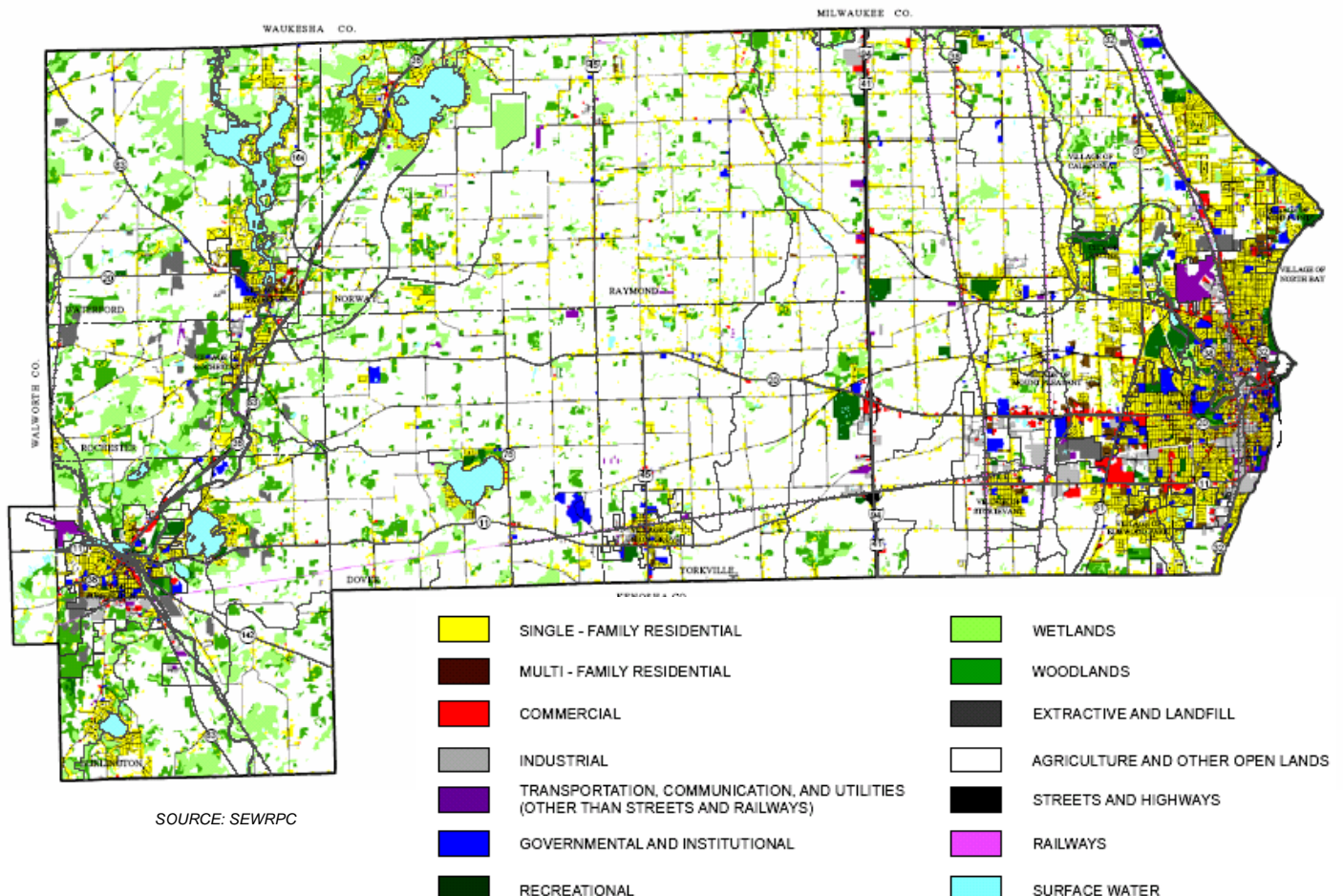
- 6 public-use: 1 publicly owned (Burlington Municipal), 5 privately owned (John H Batten, Cindy Guntly Memorial, Fox River, Sylvania and Valhalla)
- 4 private-use airports
- 5 private-use heliports

## Marinas, Harbors and Ports

In 2006, there were a total of 7 privately-owned marinas in Racine County:

- 6 are located in the City of Racine
- 1 is located in the Village of Waterford

## EXISTING LAND USE IN THE RACINE COUNTY PLANNING AREA: 2000



SOURCE: SEWRPC