

RACINE COUNTY SHERIFF DEPARTMENT

ANNUAL REPORT - 2007



ROBERT D. CARLSON

SHERIFF



Serving Racine County with Compassion,

Understanding and Tolerance.

Gathering Facts Impartially, so that clear determinations

of violations of Law can be made and acted upon with

Diligence.

Table of Contents

Greetings Letter	4
Sheriff Robert D. Carlson	5
Mission Statement.	6
2007 Administrative Staff	7
2007 Operations Structure	10
2007 Organizational Chart.	11
Racine County Jail	13
Jail Programs	15
Jail Revenues	17
Jail Population	18
Investigative Bureau	21
Evidence Division	23
Dive Rescue Team	24
Communications Center	26
Records Bureau	29
Patrol Division	32
I-94 Corridor C.O.P.S.	34
Robert L. Rohner Training Center	35
K-9 Unit	36
Metro Drug Unit	38
Water Patrol	40
Fiscal Information	42

September 14, 2008

Greetings;

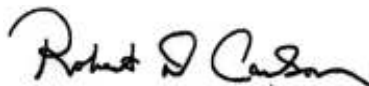
The Racine County Sheriff's Department is a major law enforcement agency in Racine County. Our agency has full law enforcement authority throughout the county, including all the towns, villages, and cities, as well as the waters of Lake Michigan. We provide the following specialized functions:

- Metro Drug Unit
- Civil Process Unit
- Consumer Fraud Investigation
- Criminal Investigations Bureau
- Water Patrol
- SWAT Team
- Dive/Rescue Team
- Crisis Negotiators

The Sheriff's Department is also responsible for the operation of the Racine County Jail. The jail's rated capacity of 876 persons makes it one of the largest in the state.

The professional staff of our department remains dedicated to our mission of providing the core services that help maintain public safety, peace, and order in Racine County. We also remain committed to utilizing our resources in the most efficient and responsible manner possible. Our citizens expect these things, and deserve them. It is our great privilege to deliver these services to them.

Sincerely,
Robert D. Carlson, Sheriff

A handwritten signature in black ink that reads "Robert D. Carlson". The signature is written in a cursive style with a large initial "R".

Racine County, WI



SHERIFF ROBERT D. CARLSON

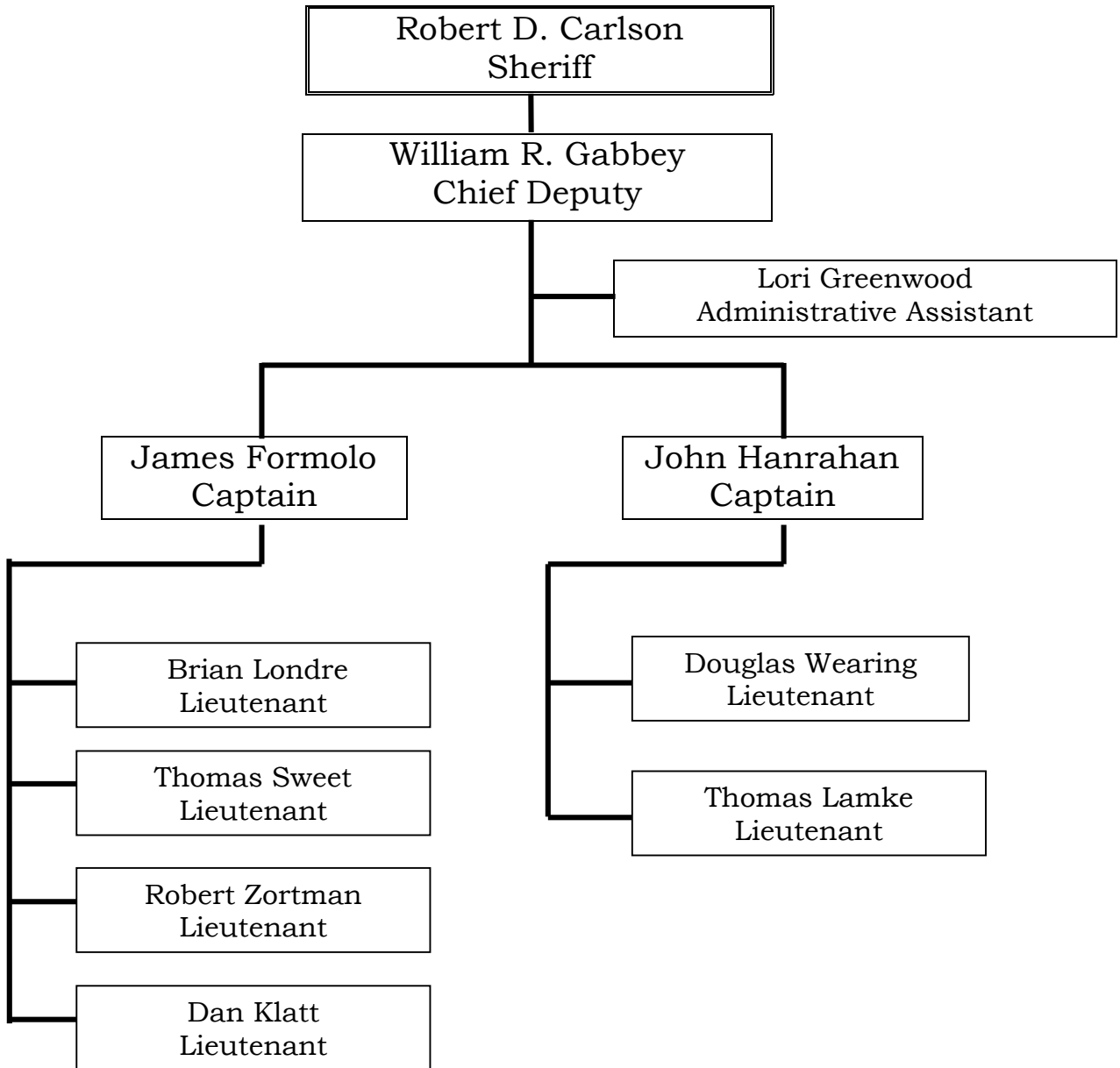
FACING THE CHALLENGE

Racine County Sheriff's Department

Mission Statement

In Partnership with the Citizens, and with the cooperation of the communities within Racine County, the mission of the Racine County Sheriff's Department shall be the preservation of public safety, peace and order. This goal shall be met through proper utilization of the available resources in the most efficient manner possible while maintaining the highest levels of professionalism.

2007 Administrative Staff



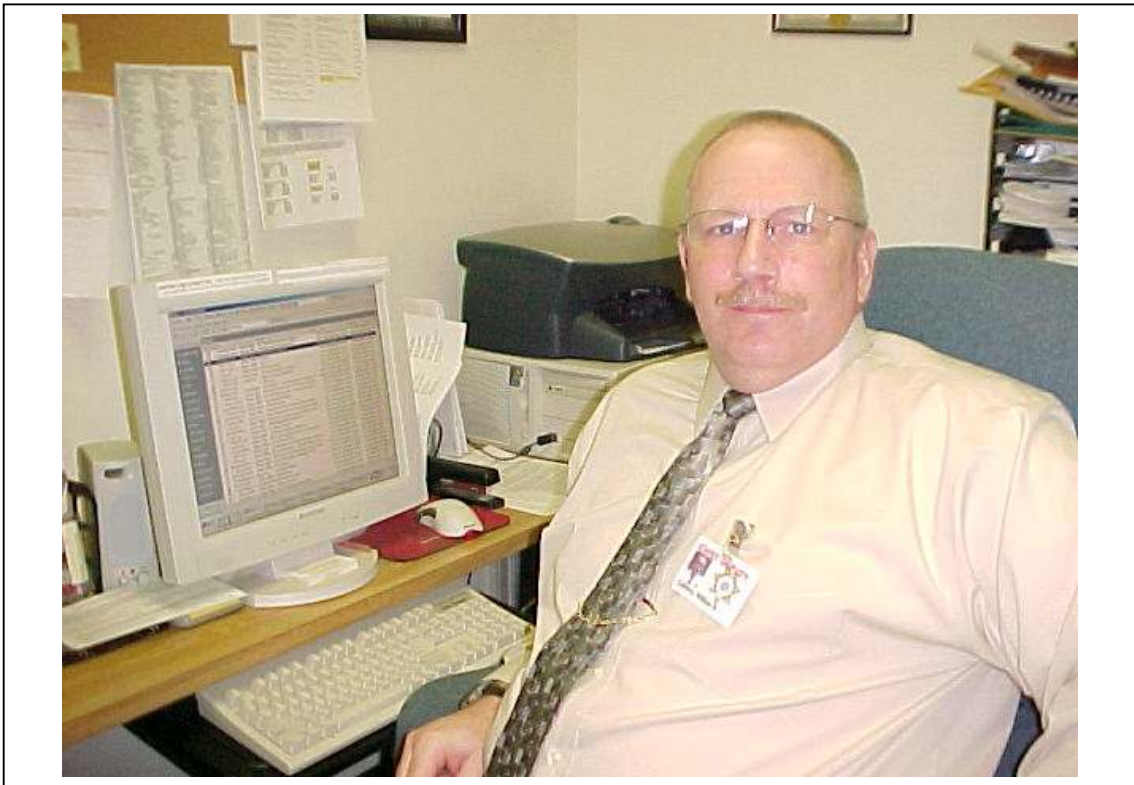
The **Sheriff's Administration** is responsible for the management and direction of the entire Department, and ensures that the Department obtains its goals and objectives.

The Sheriff's Department is a large, dynamic organization with ever-growing responsibilities. The Department is composed of many specialized units.

The Department's Administrative Staff provides support services to all operating units within the Department. Support and administrative services include; creating policy and procedure, handling citizen's complaints, accounting, records, training, communications and clerical support.



Weekly Administrative Staff Meeting – Sharing Information

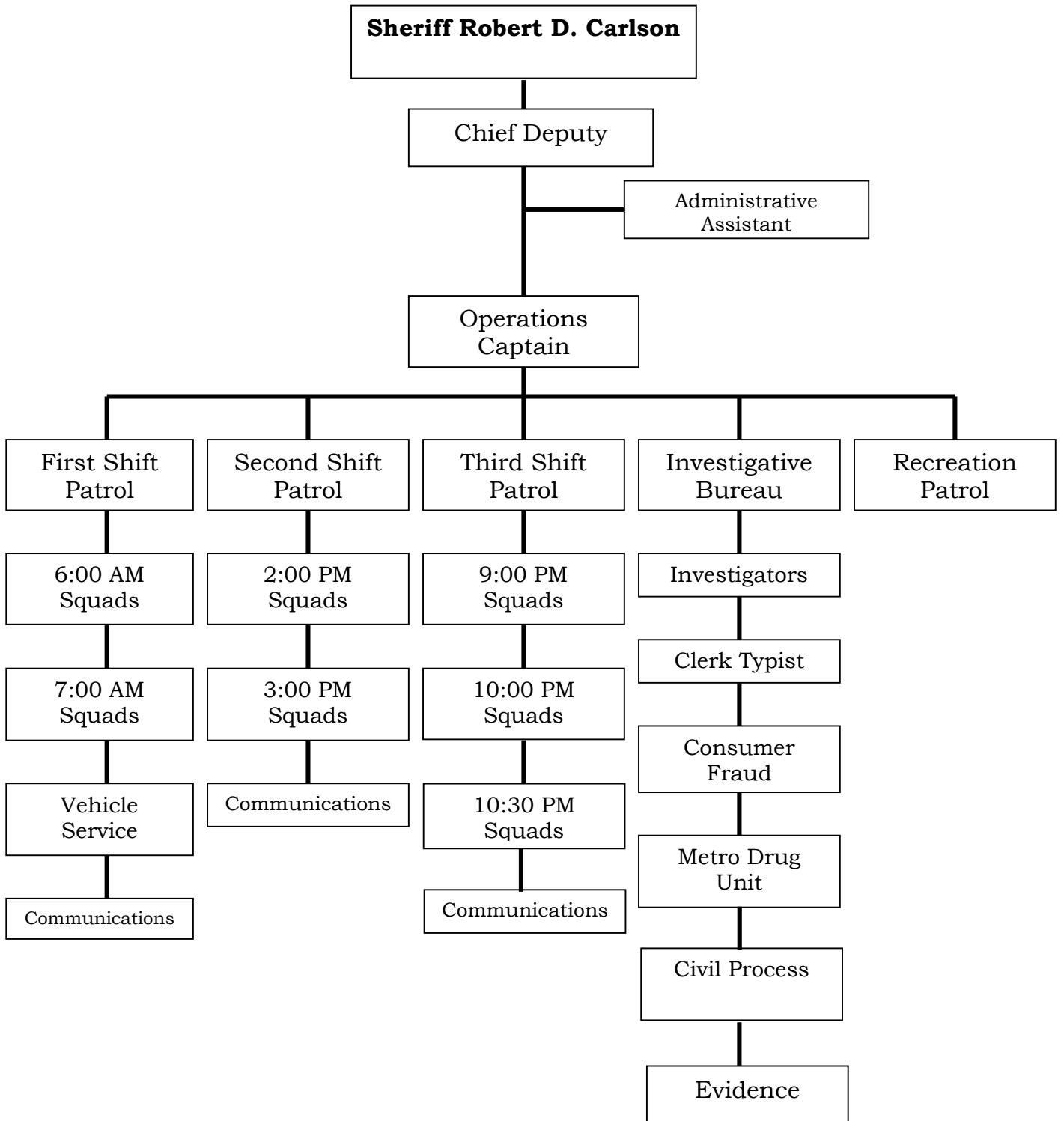


CHIEF DEPUTY WILLIAM R. GABBAY



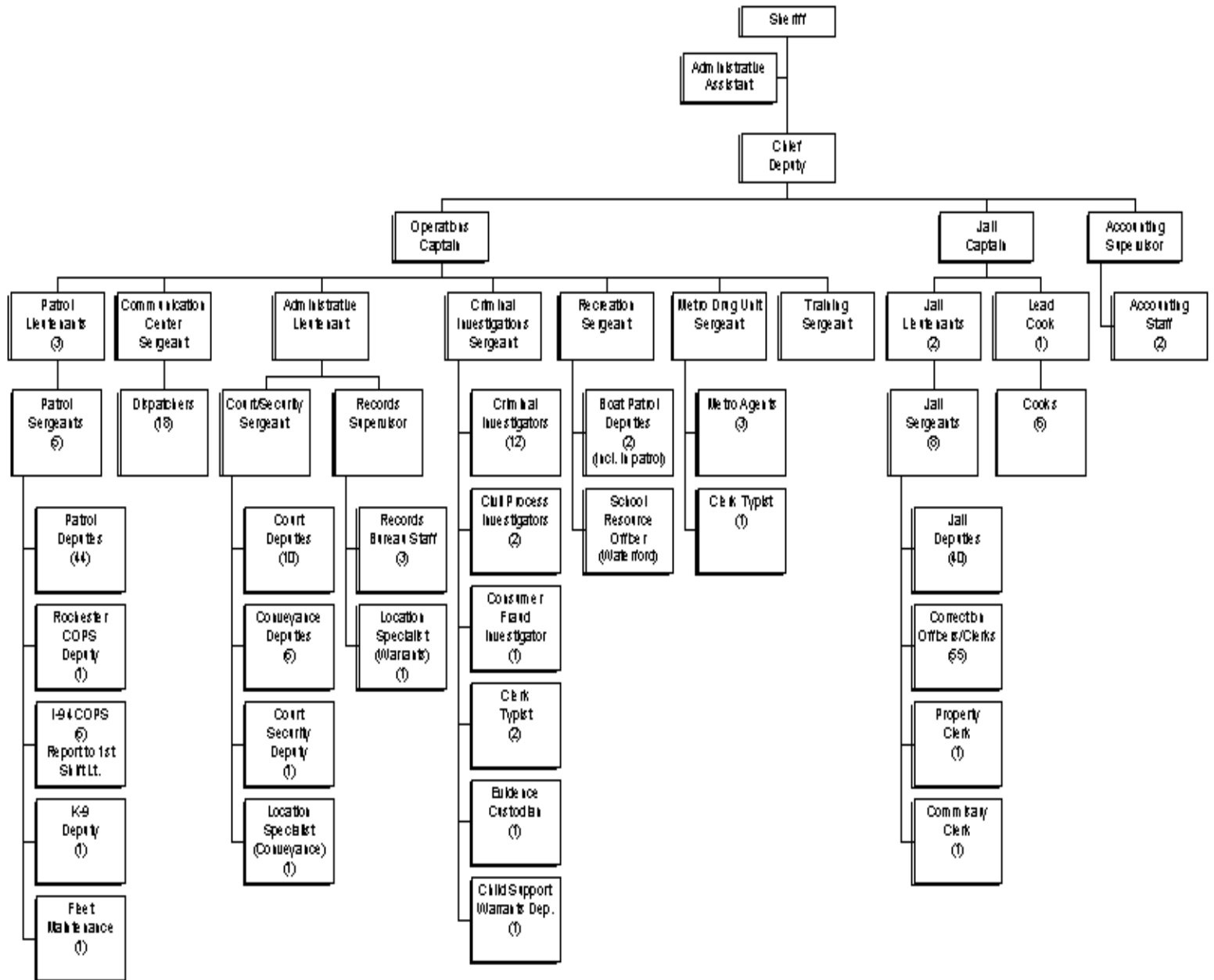
OPERATIONS CAPTAIN JAMES A. FORMOLO

2007 Operations Structure

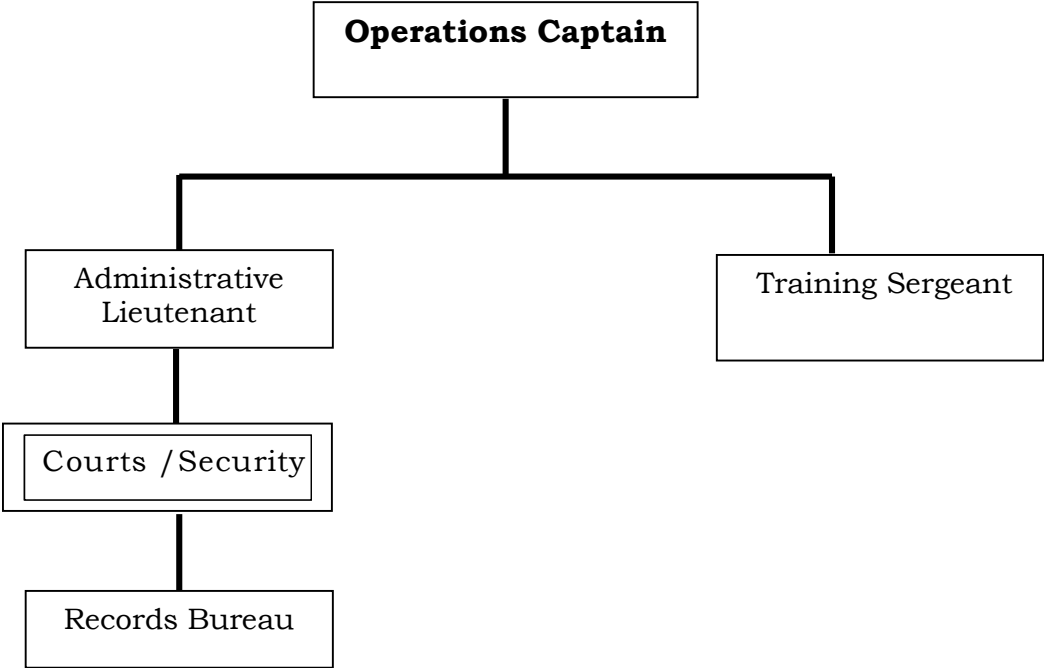


2007 Organizational Chart

Racine County Sheriff's Department



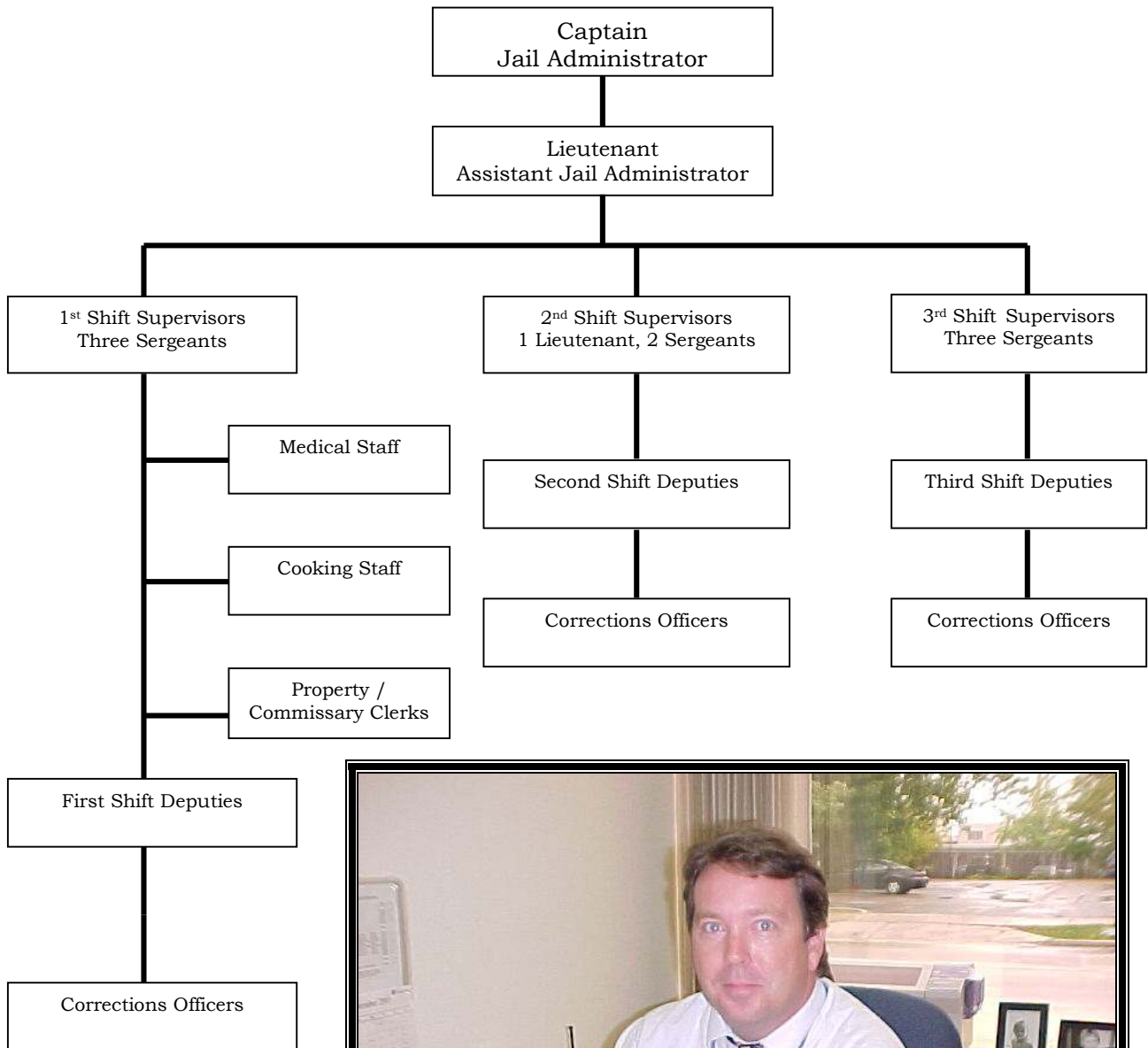
Support Services Structure



Administrative Lieutenant – Dan Klatt



Racine County Jail Staff



Captain John C. Hanrahan – Jail Administrator

The Racine County Jail

The Racine County Jail is located at 717 Wisconsin Avenue in downtown Racine. It is part of the Racine County Law Enforcement Center that opened in 1981. At the time the “new” jail opened, inmate capacity numbered 144. Today, after several expansion and double bunking projects, the jail’s capacity is 876 inmates.

Wisconsin State Statute 59.27 requires the Sheriff of each County to “Take the charge and custody of the jail maintained by the County and the persons in the jail, and keep the persons in the jail personally or by a Deputy jailer.”

Racine County employs a combination of sworn Deputy Sheriffs and civilian Correction Officers to satisfy this mandate. Jail support staff includes cooks and clerk typists.

- **31 Sworn Personnel**
- **64 Civilian Correction Officers**
- **2 Property / Commissary clerk typists**
- **4 full time equivalent cooks**
- **1 Cook Supervisor**

The Mission of the Racine County Jail is to safely, securely and humanely detain all persons admitted to the facility. To attain this mission, all staff receives professional training in modern corrections practices, and are expected to be in compliance with formal policies, procedures, and rules that guide them in the performance of their duties.

In addition to maintaining a safe and secure facility, the jail is obligated to provide for the medical, religious, and educational needs of its inmates. Religious and educational needs are met through the Racine county Jail Chaplaincy Program.

The Racine County Jail is committed to providing programs that aim to serve inmate’s needs and the needs of the community.

The **Jail Chaplaincy Program** provides a number of services and programs for inmates who request to be involved.

- Chaplaincy programs include;
- Bible Study, including Spanish and Catholic studies
- Alcoholics Anonymous meetings
- One on One mentoring
- GED and Tutoring
- High School
- Life Skills – Basic skills in good living
- Pre-Release Assistance – how to obtain clothing, food etc.
- Self Esteem – Better understanding who you are / who you want to be
- Anger Management – Men & Women
- Communications – learning to express yourself better
- Issues – Women only
- Domestic Violence – Women
- Library Services
- Drug Abuse Counseling
- Worship Services
- Post Release Support @ 262-898-8585



The Chaplaincy Program maintains a web site at:
www.racinecounty.com/chaplain

Other programs are provided to inmates in addition to those of the Jail Chaplaincy. The jail provides a comprehensive in house **AODA Treatment Program**, started in June of 1998. The AODA Treatment Program has two main components: a 20-day in-jail element and a nine-month post jail aftercare module.

The housing configuration allows up to twenty inmates, both male and female, to receive treatment during the in-house portion. This is an intensive segment administered by certified AODA professionals. It lasts for approximately twenty days and runs from 7:00 AM

until 10:00 PM seven days a week, including holidays.

The aftercare phase is nine months long and is a holistic service integrating housing, employment and other community outreach assistance, as well as continued alcohol and drug counseling. Inmates are admitted to aftercare after successful completion of in-house treatment and staying of their sentences by the sentencing court. If the inmate successfully completes the aftercare phase, the stayed sentence becomes time served.



Inmate Workers Earning Credit Towards Early Release

The jail's **Inmate Worker Program** and **Community Work Service Program** allow approved inmates to earn reductions in their sentences. Inmate Worker participants work in the jail kitchen and laundry, as well as performing janitorial work throughout the jail interior. Community Work Service participants work for non-profit community groups. In each program, the goals are to have the inmates provide useful service to the community and reduce jail bed days.

Jail Revenues

The Racine County Jail generates revenue from a number of sources, which are detailed in the table below.

Revenue Source	2000	2001	2002	2003	2004	2005	2006	2007
SPO Holds	\$440,208	\$509,085	\$598,543	\$460,960	\$336,240	\$224,138	\$165,258	\$206,752
Comm. Sales	\$337,608	\$275,052	\$362,518	\$363,390	\$354,624	\$210,968	\$175,886	\$127,797
Bed Rentals	\$574,449	\$644,032	\$202,070	\$1,568	\$56	\$0	\$0	\$20,121
Inmate Phones	\$520,615	\$601,463	\$477,782	\$526,570	\$599,747	\$435,675	\$368,642	\$543,342
Other Municipalities	\$32,089	\$108,708	\$138,245	\$165,184	\$85,525	\$75,583	\$99,015	\$103,161
Huber Law	\$405,709	\$334,346	\$298,782	\$308,946	\$319,702	\$319,008	\$273,640	\$356,668
SS Reimbursement	\$14,600	\$18,898	\$27,600	\$16,400	\$26,200	\$36,400	\$42,333	\$41,600
Dept of Public Instruction Detention Lunch				\$44,980	\$99,250	\$84,920	\$110,150	\$91,564
Totals	\$2,325,278	\$2,491,584	\$2,105,540	\$1,887,998	\$1,821,334	\$1,386,692	\$1,234,924	\$1,491,005

Jail Population

Persons are admitted to the Racine County Jail for numerous reasons. Some of the causes are:

- Sentenced Inmates (Huber and General population)
- Pre Trial detainees
 - State Probation Holds
 - Holds for other Jurisdictions
 - Returned on Writs

The jail population increased significantly during the decade of the Nineties, and continues in 2007, reflecting a nation wide trend. The increase in the average daily population is shown below.

	1995	1996	1997	1998	1999	2000	2001	2002	2003	2004	2005	2006	2007
Jan	466	542	513	591	651	614	559	569	620	619	611	661	698
Feb	474	509	565	621	678	619	579	592	629	613	616	673	662
Mar	502	489	580	676	642	601	599	610	634	620	619	683	662
Apr	518	480	562	641	664	607	599	639	634	661	638	643	684
May	519	478	523	645	646	614	592	645	656	665	662	654	725
June	527	510	526	649	648	604	575	646	655	679	710	643	749
July	513	547	515	624	639	616	605	654	659	652	722	688	768
Aug	505	535	541	655	644	632	619	641	660	647	728	707	758
Sept	534	543	578	674	639	610	628	659	655	645	733	720	773
Oct	533	547	561	670	634	589	619	680	682	668	721	715	758
Nov	556	524	534	678	634	565	583	655	675	662	685	709	739
Dec	539	483	524	642	611	535	543	602	636	611	603	694	701
Average	516	516	544	645	644	612	592	633	650	645	671	683	723

The Racine County Jail

Racine County Jail Admissions

1995	1996	1997	1998	1999	2000	2001	2002	2003	2004	2005	2006	2007
7,256	7,199	8,030	8,644	8,414	8,637	9,799	10,931	10,859	10,680	10,829	11,650	11,624

Average Length of Stay in Days

1995	1996	1997	1998	1999	2000	2001	2002	2003	2004	2005	2006	2007
25.9	26.1	24.3	26.2	27.5	25.9	24.2	25.1	26	22.6	20.5	21.4	22.7

Bed Days Saved by Program

	2002	2003	2004	2005	2006	2007	TOTAL
AODA Program	7348	7444	7520	7308	7650	7544	44814
Employment Program - August 2003		1035	5410	5868	6809	7519	26641
Day Reporting Center	5022	7790	7517	8412	8172	8033	44946
Treatment Court						1135	1135
TOTAL	12370	16269	20447	21588	22631	24231	117536

In order to accommodate the increased demands on the jail's space, the entire living facility area was double bunked in a renovation project completed in 1998.

The Sheriff's Department has implemented AODA, Children First and Community Work Service programs so that more jail bed days could be saved. The Sheriff and jail management have continued to explore ways to relieve crowding, including the implementation of a Day Reporting Center in early 2001.

In 2006, the County Board approved a jail construction project that included additional dormitory style housing for inmates, a new intake area, a new vehicle sally port and remodeling of the first floor of the existing jail. The addition, increasing the jail's capacity to 876 was completed in the fall of 2007.

Jail Management Computer Software was implemented in the jail in October of 2000.

The project has allowed management to more efficiently utilize the jail's most important resource: its Staff.

Because of a number of laws and administrative codes, the jail staff must perform many man-hour-intensive tasks relating to inmate property, money, health care, medication, housing, movement, and so on. The implementation of the software project allows these tasks to be performed more efficiently. The management package also enables jail staff to develop accurate information concerning inmate demographics and population trends. These statistics will enable staff to make informed assessments and projections of how the facility is used, and by whom.

Racine County Jail



Racine County Sheriff's Department Investigative Bureau

The Racine County Sheriff's Department Investigative Bureau was comprised of 1 Sergeant and 15 Investigators. Two Investigators are assigned to Civil Process and 1 to Consumer Fraud Investigations.

The Investigative Bureau has a number of specialized units staffed by highly trained and skilled Investigators.

- **Sexual Assault**
 - **Child Abuse**
 - **Burglary & Theft**
 - **Arson Investigations**
 - **White Collar & Financial Crimes**
 - **Internet Crimes**
 - **Traffic Investigations**
 - **Consumer Fraud**
 - **Death Investigation**

2007 Criminal Investigation Activity Summary

Thefts 651
Burglaries 128
Sex Offenses 96
Physical Assaults 119
Fraud 147

Racine County Sheriff's Department Investigative Bureau



Investigations Supervisor - Sergeant James Weidner



Investigator Tracy Hintz

Racine County Sheriff's Department Evidence Custodian

The Racine County Sheriff's Department Evidence Custodian, Leslie Hurdis, is responsible for the proper collection, identification, and preservation of evidence collected by Deputies and Investigators.

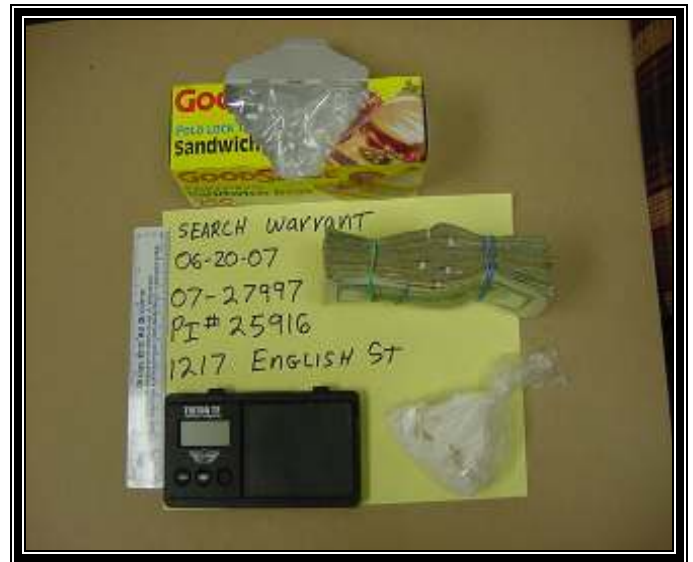
The Evidence Custodian maintains the 'chain of custody' of evidence that may be sent to the Crime Lab for analysis.

Collection and processing of evidence is a constantly changing field that demands the Department be current in the latest technological procedures. Our Evidence Custodian is also highly involved in learning new processes, and training members of the Department in proper technique.

In the year 2007, 4,111 items of evidence were inventoried !

In 2007, 2526 items were returned to the rightful owner or disposed of. Fifty-nine vehicles were processed, 368 items were taken to the Crime Lab for analysis.

In addition to evidence of criminal activities, 210 blood samples of potential OWI situations were processed in the always-busy Evidence Division.



METRO DRUG Search Warrant Results

Racine County Sheriff's Department Dive Rescue Team

The Racine County Sheriff's Department Dive Rescue Team has evolved into the Racine County Water Rescue Response Team (RCWRRT). The RCWRRT operates under the authority of Sheriff Robert D. Carlson. RCWRRT members are comprised of Sheriff's Deputies, Fire Department personnel and other law enforcement officers from public safety agencies within Racine County. RCWRRT members include rescue divers, surface rescuers and shore support personnel. At the present time, the RCWRRT has approximately 45 members.

The primary function of the RCWRRT is to make every reasonable attempt to save any person that may be drowning or has disappeared under the surface of any body of water within Racine County.

The RCWRRT schedules intensive practical training for approximately six hours per month. All active divers must have a minimum of an advanced certification through the Professional Association of Diving Instructors organization.

The RCWRRT has also obtained specialized equipment to make underwater searches safer and faster. This includes an underwater towable video system, diver to diver underwater communications, and a diver to surface video system. Zodiac boats are staged east and west of I-94 for rapid deployment to any body of water in Racine County.

Additionally, the RCWRRT will make every reasonable effort to recover the body of any person that has been declared a drowning victim in any body of water within Racine County.



Racine County Sheriff Department Diver

Many RCWRRT members have taken advanced courses and are certified in Ice Diving, Ice Rescue, Advanced Open Water, Rescue Diver 1, Rescue Diver 2, Swift Water Rescue, Underwater Investigator, Medical Dive Specialist, Deep Water Diver, Underwater Death Investigator, Wreck Diver, Night Diver, Dive Master, Nitrox Diver, Computer Diver, Technical Diver, Dive Instructors and Dive Equipment Repair Specialist.

Racine County Sheriff's Department Dive Team

Proficiency Training 2007

611.5 Hours

2007 Calls For Service

Search For Evidence

3

Vehicle Retrieval

4

Buoy Marker Setting

1

Demonstration

4

Rescue / Recoveries

8

Assist Parks / Other Jurisdictions

5

Search for Sunken Boats

1

Remove Underwater Obstructions

1

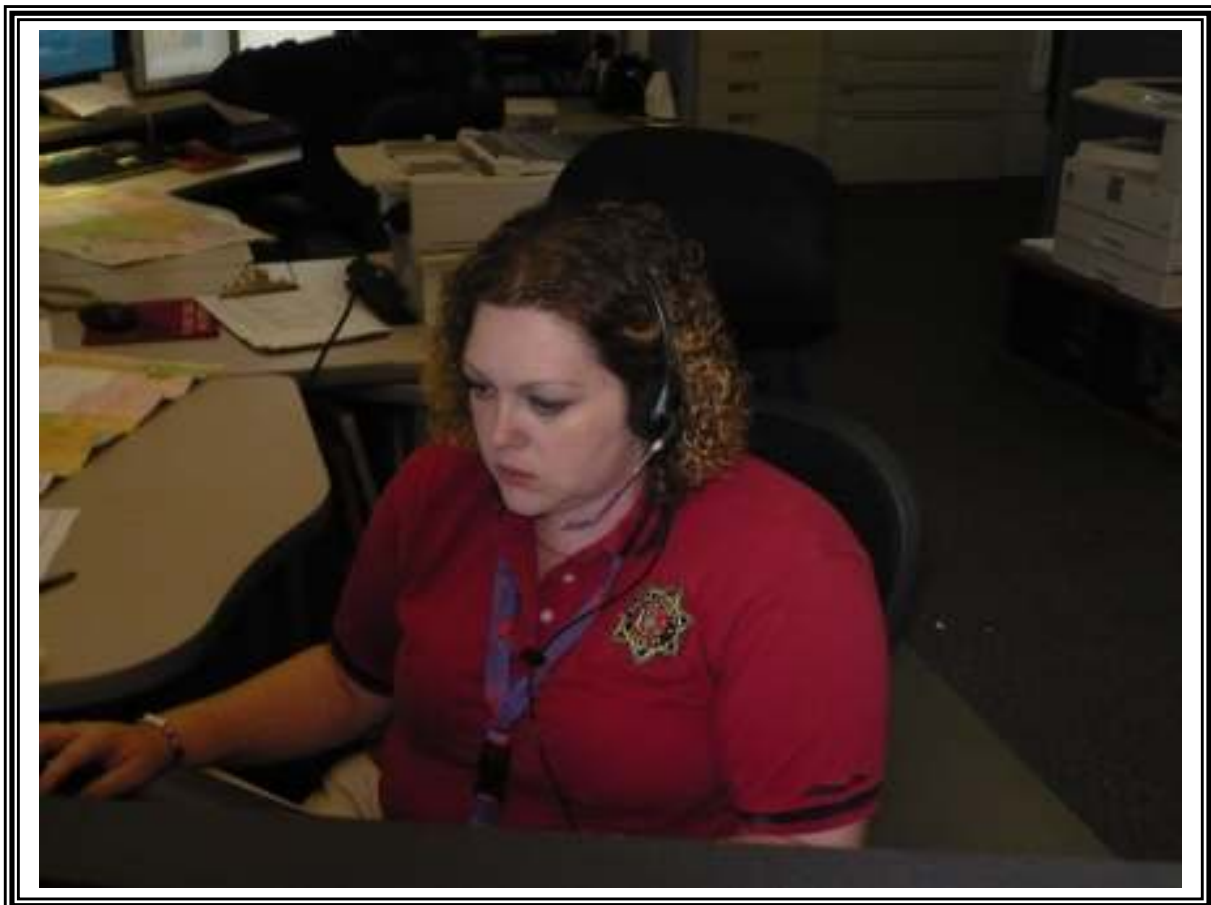
Racine County Sheriff's Department Communications Center

The Racine County Communication Center (RCCC) operates under direction and authority of the Sheriff of Racine County to provide reliable and efficient emergency call taking, dispatching services and administrative support for County law enforcement and for municipal law enforcement, fire and emergency medical services for which RCCC has dispatch responsibility. The RCCC is a Public Safety Answering Point for the Emergency 9-1-1 system, as well as for Voice Over Internet Protocol (VoIP) 911 calls, and is the designated wireless 9-1-1 PSAP for *all* mobile 9-1-1 calls throughout the County of Racine. The RCCC currently dispatches emergency services for 15

out of the 25 public safety agencies operating in Racine County.

The Communications Center answers thousands of informational requests each year. Callers requesting information on road closures, weather conditions, public event schedules, fishing and hunting regulations, aviation rules, boating laws, court functions, jail procedures, warrants, traffic laws, civil dispute situations, custody disagreements, and a multitude of other topics, expect and receive answers or a direction to proceed in, each hour of every day.

Communications Technician Amy Klaus



Our Communications Center at the Ives Grove location opened on January 12th, 2004. Planning for the future, the Communications Center was constructed and equipped to be the central Communications Center for all Law Enforcement and Fire / Rescue agencies in Racine County with the exception of the City of Racine.

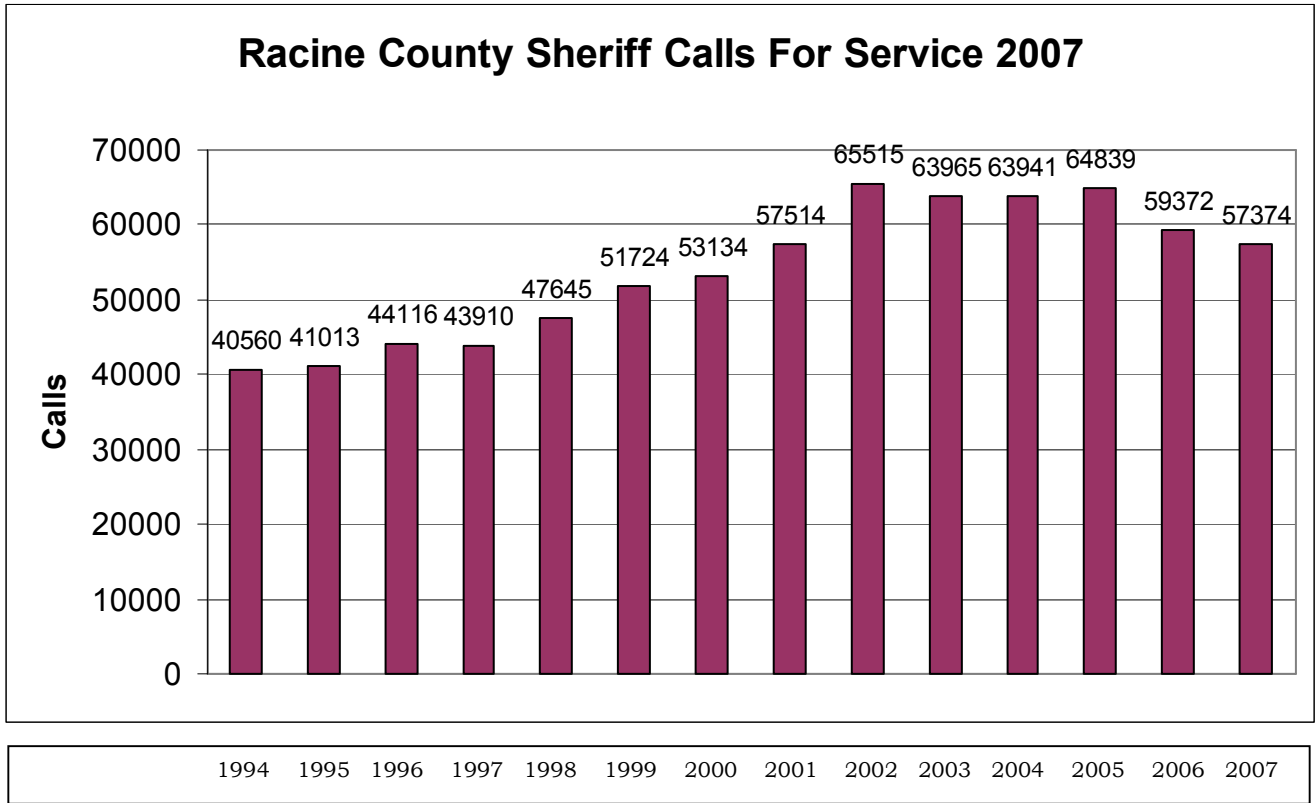
Leading the movement towards complete interoperability, The Sheriff's Department stands ready and able to fill the needs of the decades ahead.

The Racine County Sheriff's Communications Center is precisely that the Center of Communications, the initial point of contact for Officers and citizens who need and expect a response.

Racine County Communications Center & Patrol Station



Racine County Sheriff's Department Calls For Service



Racine County Sheriff's Department Records Bureau



Administrative Services Manager – Sue Larsen

The Records Bureau is responsible for all records generated by patrol, investigative, and jail personnel in the normal course of their duties. These records include incident reports, accident reports, citations, photographs, video tapes, investigative reports, jail records, and any other documents related to these records kept during the normal course of business.

Filing, data entry of pertinent information, and storage are the main functions involved with maintaining the records. Arrest paperwork is collected, processed, and disseminated to the courts and District Attorney's Office as appropriate. The Records Bureau also maintains inactive jail files, fingerprint cards, and mugshots as part of its centralized records and identification functions. Records are warehoused for seven years prior to the destruction process set forth by Racine County. Some records, due to their nature, are kept past the seven-year period with no possibility of destruction.

Civil Process clerical functions are handled by Records Bureau personnel. This includes data entry, tracking, processing necessary documents, and collecting fees due.

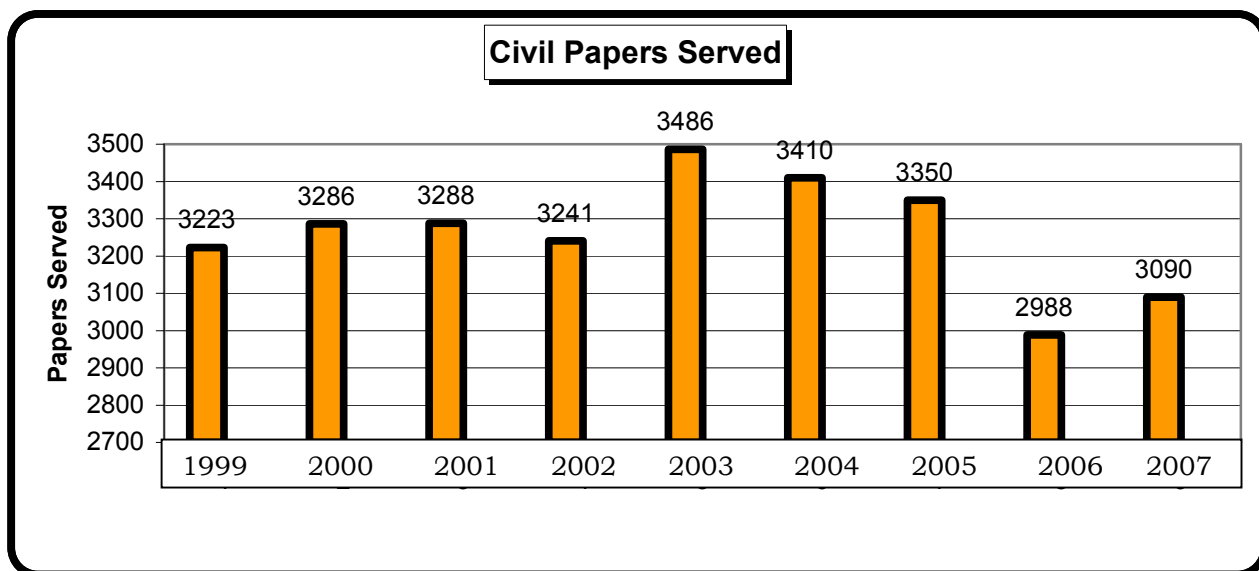
Records clerks perform data entry, fingerprinting and photographing of non-custody defendants, sex offender registrants, juveniles arrested, and applicants and citizens requiring special licenses or certifications. This function utilizes jail management software and is interfaced with the State of Wisconsin Crime Information Bureau for electronic submission of fingerprints.

Records Bureau personnel respond to a wide range of requests for information and records from the general public, news media, attorneys and prosecutors, other law enforcement agencies, courts, and departmental employees. Crime statistics and arrest and accident report information is filed with the proper State and Federal agencies. Criminal record checks and requests filed under WI Open Records Law are date sensitive and are handled as high priorities.

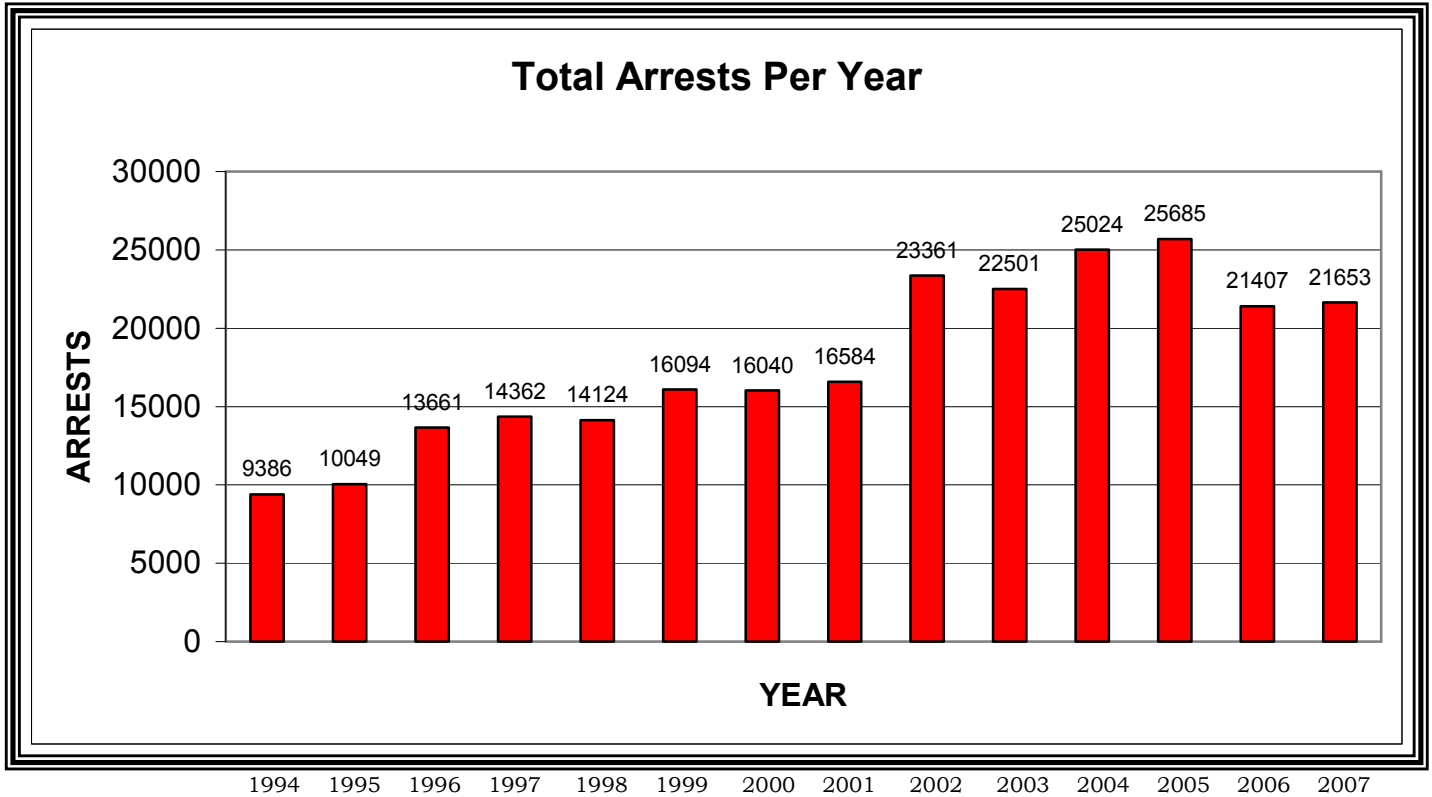
Currently, the Records Bureau staff includes one supervisor and three full time clerks. Office hours are from 7:00 AM until 4:30 PM, Monday through Friday excluding legal holidays.

The Records Supervisor is also responsible for the position of Warrants Location Specialist. This person tracks, validates, and processes warrants served by deputies of this Department. The Warrants Location Specialist files detainers and coordinates with applicable courts to correct or amend warrant documentation.

Currently, the Records Supervisor is responsible for software application administration for dispatch and records management. This includes troubleshooting, training, drafting and implementation of procedures, and quality control for data entry functions. The Supervisor interacts with other networked agencies for software procedures and implementation.



Racine County Sheriff's Department Total Arrests per Year



Dispatch Technician Sue Conley



Racine County Sheriff's Department Patrol Division

In any Law Enforcement operation, whether a Sheriff's Department or Municipal Police Department, the backbone of the Department consists of the uniformed Patrol Division.

The uniformed Patrol Division of the Racine County Sheriff's Department currently has 53 Deputies and Supervisors who are responsible for Patrol activities in Racine County. They are supported by 18 civilian Dispatch Technicians.

The Sheriff's Dept. Patrol Division is the primary patrol operation for many of the Town's and Village's in Racine

County, and has shared patrol responsibilities in those jurisdictions with their own full or part-time patrol operation.

The Patrol Division is supported and assisted by the Criminal Investigations Bureau, Metro Drug Unit, Racine County Water Safety Patrol and the Sheriff's K-9 Unit.

The Sheriff's Department also provides contractual services for the Village of Union Grove, the Village of Waterford, the Village of Elmwood Park, the Town of Dover, the Town of Raymond, the Town of Rochester and the Village of Rochester.



Vehicle Service Technician - Mark Ruggaber at the Patrol Station.

Highway Safety and the Sheriff's Department



Deputy Jonathan Eckblad

Racine County Traffic Fatalities

1999	2000	2001	2002	2003	2004	2005	2006	2007
13	27	22	22	18	20	26	21	17

Motorist's disregard for traffic laws contributes directly to injury and fatal accidents. The Racine County Sheriff's Department has taken an aggressive position in efforts to make the roadways in Racine County a safer place to operate motor vehicles.

In 2007, Wisconsin Department of Transportation awarded a total of \$40,000.00 for 2 safety programs.

The Sheriff's Department participated in I-94 speed and aggressive driving enforcement, underage drinking and alcohol sales compliance.

2007 I-94 Corridor C.O.P.S. Activity Summary

Speeding Citations	6,912
OWI Arrests	58
Other traffic Citations	864

Drivers license violations	1,053
Registration violations	1289
Restraint violations	240
Open intox /MV	50
Misd/Ord. Non traffic arrests	170

Felony drug (not warrant)	43
Misd drug (not warrant)	87
Resist/obstruct	53
CCW/weapons	11
Poss of THC (misd/ord)	63
Poss of cocaine (misd)	6
Warrants/Commitments	322
Recovered stolen vehicles	4
Recovered stolen plates	5
Recovered stolen firearm	1

Drugs seized:	
THC	947.9 grams
Cocaine	15.5 grams
Schedule II, IV, V Drugs	113 tabs
Non-Schedule Drugs	194 tabs

2007 citations/arrests: 11,031

Cash seized	\$10,723.37
-------------	-------------

The Racine County Sheriff's Department has created the I-94 Corridor Patrol. Officers aggressively patrol the Interstate as well as property locations within one mile of I-94 in efforts to make the roadways and businesses in Racine County a safer place to operate motor vehicles and conduct commercial operations.

The operation is in its fifth year of operation, and has made a significant impact on traffic safety in Racine County, reducing serious injury accidents from non corridor patrol years.



I-94 Corridor Deputies Drewitz & Thompson

The Robert L. Rohner Training Center

The Robert L. Rohner Training Center is a joint venture between the FBI, the Racine County Sheriff's Department, and WE Energies. Discussions began during 2003/2004 culminating in a financial commitment by the FBI and WE Energies donating land under the terms of a zero-cost lease agreement. The FBI contributed approximately \$1.5 million for the construction of a building, grounds improvements, and a range house to serve the training needs of the FBI, the Racine County Sheriff's Department, and other local police agencies. WE Energies contributed approximately 25 acres of land along with enough clean fill to erect the existing berms on the north end of the range property. The training center is also available to other Racine County law enforcement agencies & Gateway Technical College.

The main building on the training center grounds features traditional classroom space on the main level along with bathrooms, showers, and a locker room. The classroom is equipped with audiovisual technology to accommodate various media formats for training and presentations. The lower level contains additional classroom space with a well-cushioned floor and open space for use in dynamic training. The building is climate-controlled year around.

The training center contains both a pistol range and a rifle range to accommodate the different types of weapons systems typically in use by law enforcement. The pistol range is equipped with a range tower that provides a vantage point for observation and it also serves as a control center for the fully automated target system. The architectural design of the training center along with the incorporated technologies ensure that Racine County Law Enforcement training needs are met well into the future.

Robert L Rohner Training Center



In 1999, the Racine County Sheriff's Department began its first Canine unit. With the generous support of numerous businesses and people, a capital goal was reached. With participation from the Racine County Deputy Sheriff's Protective Association a handler was chosen.

Deputy Kyle Poelmann was partnered with K 9 DAX. They trained intensively for five weeks before returning to Racine and active duty. Due to the onset of a serious health condition, DAX retired on April 20, 2006. DAX passed away on July 10, 2006.

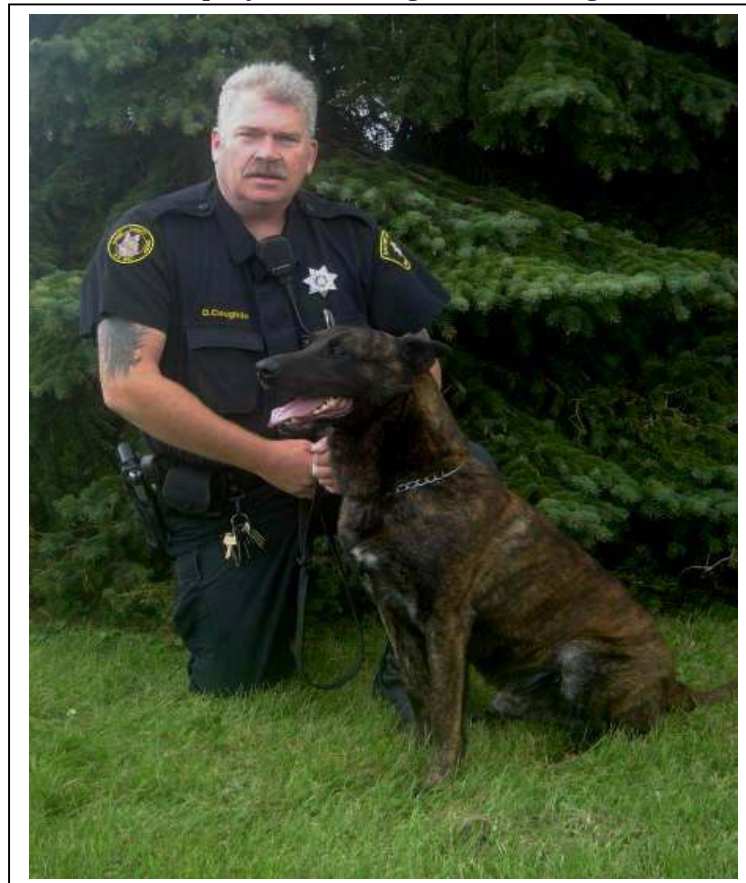
On June 5th, 2005, Deputy David Coughlin, a 16-year Department veteran, was selected to be the next K 9 Officer. Deputy Coughlin was sent to Spring Hope North Carolina for 6 weeks

of intensive training at the Southern Police K 9 School.

Deputy Coughlin was partnered with Gingiss, a Belgian Malinois. Gingiss is a dual purpose K 9, trained in narcotics detection as well as tracking, building and area searches, as well as searching for articles and evidence.

Since beginning duty on August 28th, Deputy Coughlin and Gingiss have made many criminal arrests by tracking wanted persons, found two suicidal persons and made numerous narcotics arrests.

Deputy David Coughlin and Gingiss



Racine County Sheriff Patrol Division Statistics

	2001	2002	2003	2004	2005	2006	2007
Total Miles Driven:	849,249	1,668,434	1,235,802	1,152,091	1,129,063	809,468	1,112,775
Total Hours Worked:	79,819	88,112	84,197	84,988	82,897	79,258	77,740

Complaint Activity:

Complaints Assigned:	17,308	17,722	17,414	19,368	17,948	17,852	17,139
Deputy Originated:	6,491	8852	8,975	9,025	8,235	7,968	7,925
Complaint Follow Up	28,923	23,041	24,684	23,519	20,436	18,321	17,177
Complaints Assisted	5,206	5,164	6,198	6,392	6,294	5,957	5,163
Total Complaints	57,920	54,777	57,271	58,288	52,913	50,098	47,404

Citizen Contacts

Written Warnings	6,173	7,939	7,467	7,636	6,708	5,060	4,368
Arrest Warrants	1,042	1,123	1,501	1,327	1,679	1,489	1,090

Arrest Activity

Speeding Citations	3,444	6,171	7,865	10,356	9,874	7,961	8,301
Other Traffic Violations	6,890	9,443	8,457	8,700	9,606	7,074	6,461
OWI	412	426	437	557	568	536	445
Citations from Crashes	694	803	1,230	611	591	468	540
Parking	1,519	1,244	1,514	1,264	1424	1,367	1337
Felonies	135	137	162	162	155	192	187
Misdemeanor Arrests	983	984	851	999	922	979	846
Ordinance Arrests	932	807	915	793	865	778	791
TOTAL ARRESTS	16,215	21,138	22,501	25,024	25,685	20,849	19,998

Racine County Sheriff's Department Metro Drug Unit

Five Investigators, one supervising Sergeant, and a part time Secretary currently staff the Racine County Metro Drug Unit. Three Investigators and the Sergeant are Sheriff's Department Officers, one Investigator is a Village of Caledonia Officer and the City of Racine assigns one.

The Unit was created to provide a coordinated and comprehensive effort to investigate and arrest those who engage in the trafficking of illegal drugs within

Racine County. The Unit works closely with the FBI, IRS, DEA and the Federal Prosecutors Office, as well as other State and local Law Enforcement agencies.

During 2007, there were 1,050 arrests made for various drug charges in Racine County. Of those arrested, 142 are juveniles. There were 406 Felony charges, 437 Misdemeanors, and 65 Ordinance violations. Metro Drug also executed 51 search warrants during 2007.

2007 Metro Drug Activity

Substance	Quantity	Street Value in US Dollars
<u>Aderrall</u>	61 tbls	305
<u>Alprazolam</u>	242 tbls	1210.00
Clonazepan	48 tbls	240.00
Cocaine	6045.5 grms	302,275.00
Crack Cocaine	671 grms	40,260.00
Heroin	64.4 gms	12,880.00
<u>Hydrocodone</u>	116 TBLS	580.00
Lorzapam	10 tbls	50.00
Marijuana – THC	42,414.4 grms	424,144.00
Marijuana Plants	708	708,000.00
Vicoden	17 tbls	85.00
Xanax	88 tbls	440.00
Oxycontin	15 tbls	225.00
Oxycodone	240 tbls	3,600.00
Methadone	50 tbls	250.00
Misc Tablets	2773 tbls	13,865.00
<u>Total</u>		\$1,508,409.00

Metro Drug Unit

2003 Felony Charges

189

2004 Felony Charges

255

2005 Felony Charges

313

2006 Felony Charges

457

2007 Felony Charges

406

2003 Search Warrants

50

2004 Search Warrants

45

2005 Search Warrants

48

2006 Search Warrants

16

2007 Search Warrants

51

Racine County Sheriff's Department Water Safety Patrol



The Racine County Sheriff's Department continues to operate the Water Safety Patrol on Lake Michigan and on inland lakes and rivers throughout Racine County. The Water Safety Patrol operates from April 1st until about the second week of November. During the summer months, Water Safety Patrol Deputies are assisted by approximately 6 college student summer employees.

The Water Safety Patrol continues to be partially funded by the Department of Natural Resources. Annually, up to 17% of the costs of operating the Water Safety Patrol are reimbursed to Racine County.

The Racine County Sheriff's Water Safety Patrol responds to assist boaters for a variety of incidents, including accidents, engine failures, and rescue as well as enforcement activities.

Racine County Sheriff's Department Water Safety Patrol

Calls for Service 2007

Assist Other Jurisdiction	15
Boat Accident	3
Fuel Spill	4
Flare Sighting	1
Hazard to Navigation	31
Boating Violations	43
Suspicious Circumstances	5
Boat Aground	2
Drowning	1
Vessel in Distress	50
Theft	2
TOTAL CALLS FOR SERVICE	157
Citations Issued	29

Financial Summary

Expenses

	2001	2002	2003	2004	2005	2006	2007
Personnel Costs	\$18,451,244	\$19,115,208	\$19,627,306	\$21,181,290	\$21,439,732	\$22,133,156	\$22,237,493
Operating Expenses	\$3,982,451	\$3,817,180	\$4,604,675	\$3,920,810	\$4,005,205	\$3,938,628	\$3,085,639
Total Expenses	\$19,219,346	\$22,932,388	\$24,231,981	\$25,102,100	\$25,444,937	\$26,071,784	\$25,323,132

Revenues

General Gov Revenues	\$2,382,058	\$2,148,790	\$1,749,162	\$1,382,195	\$1,516,421	\$1,029,791	\$828,352
Charges for Service	\$675,166	\$849,715	\$1,514,813	\$1,712,371	\$1,674,098	\$1,652,191	\$1,526,789
Other Revenue	\$1,245,495	\$679,852	\$671,626	\$728,234	\$650,893	\$806,917	\$562,696
Total Revenues	\$4,302,719	\$3,678,357	\$3,935,601	\$3,822,800	\$3,841,482	\$3,488,899	\$2,917,837
Tax Levy	\$18,130,976	\$19,254,031	\$20,296,380	\$21,279,300	\$21,603,455	\$22,528,885	\$22,405,295



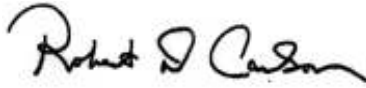
Payroll Technician – Tammy Ruggaber.

Acknowledgements

It was with the cooperation of many that this report has come to fruition.

This report represents another year of the Racine County Sheriff's Department history, progress and direction. We are moving forward

Sincerely



Robert D. Carlson
Sheriff



PIONEERING INTEROPERABILITY THROUGHOUT SOUTHEASTERN WISCONSIN