

# RACINE COUNTY SHERIFF DEPARTMENT

ANNUAL REPORT - 2009



ROBERT D. CARLSON

SHERIFF



Serving Racine County with Compassion,  
Understanding and Tolerance.

Gathering Facts Impartially, so that clear determinations  
of violations of Law can be made and acted upon with  
Diligence.

## Table of Contents

Greetings Letter . . . . .	4
Sheriff Robert D. Carlson . . . . .	5
Mission Statement. . . . .	6
2009 Administrative Staff . . . . .	7
2009 Operations Structure . . . . .	10
2009 Organizational Chart. . . . .	11
Racine County Jail . . . . .	13
Jail Programs . . . . .	15
Jail Revenues . . . . .	17
Jail Population . . . . .	18
Investigative Bureau . . . . .	21
Evidence Division . . . . .	23
Dive Rescue Team . . . . .	24
Communications Center . . . . .	26
Records Bureau . . . . .	29
Patrol Division . . . . .	32
I-94 Corridor C.O.P.S. . . . .	34
Robert L. Rohner Training Center . . . . .	36
K-9 Unit . . . . .	37
Metro Drug Unit . . . . .	39
Water Patrol . . . . .	41
Fiscal Information . . . . .	43

August 16, 2009

Greetings;

The Racine County Sheriff's Department is a major law enforcement agency in Racine County. Our agency has full law enforcement authority throughout the county, including all the towns, villages, and cities, as well as the waters of Lake Michigan. We provide the following specialized functions:

- Metro Drug Unit
- Civil Process Unit
- Consumer Fraud Investigation
- Criminal Investigations Bureau
- Water Patrol
- SWAT Team
- Dive/Rescue Team
- Crisis Negotiators

The Sheriff's Department is also responsible for the operation of the Racine County Jail. The jail's rated capacity of 876 persons makes it one of the largest in the state.

The professional staff of our department remains dedicated to our mission of providing the core services that help maintain public safety, peace, and order in Racine County. We also remain committed to utilizing our resources in the most efficient and responsible manner possible. Our citizens expect these things, and deserve them. It is our great privilege to deliver these services to them.

Sincerely,  
Robert D. Carlson, Sheriff

A handwritten signature in black ink that reads "Robert D. Carlson". The signature is written in a cursive style with a large initial "R".

Racine County, WI



SHERIFF ROBERT D. CARLSON

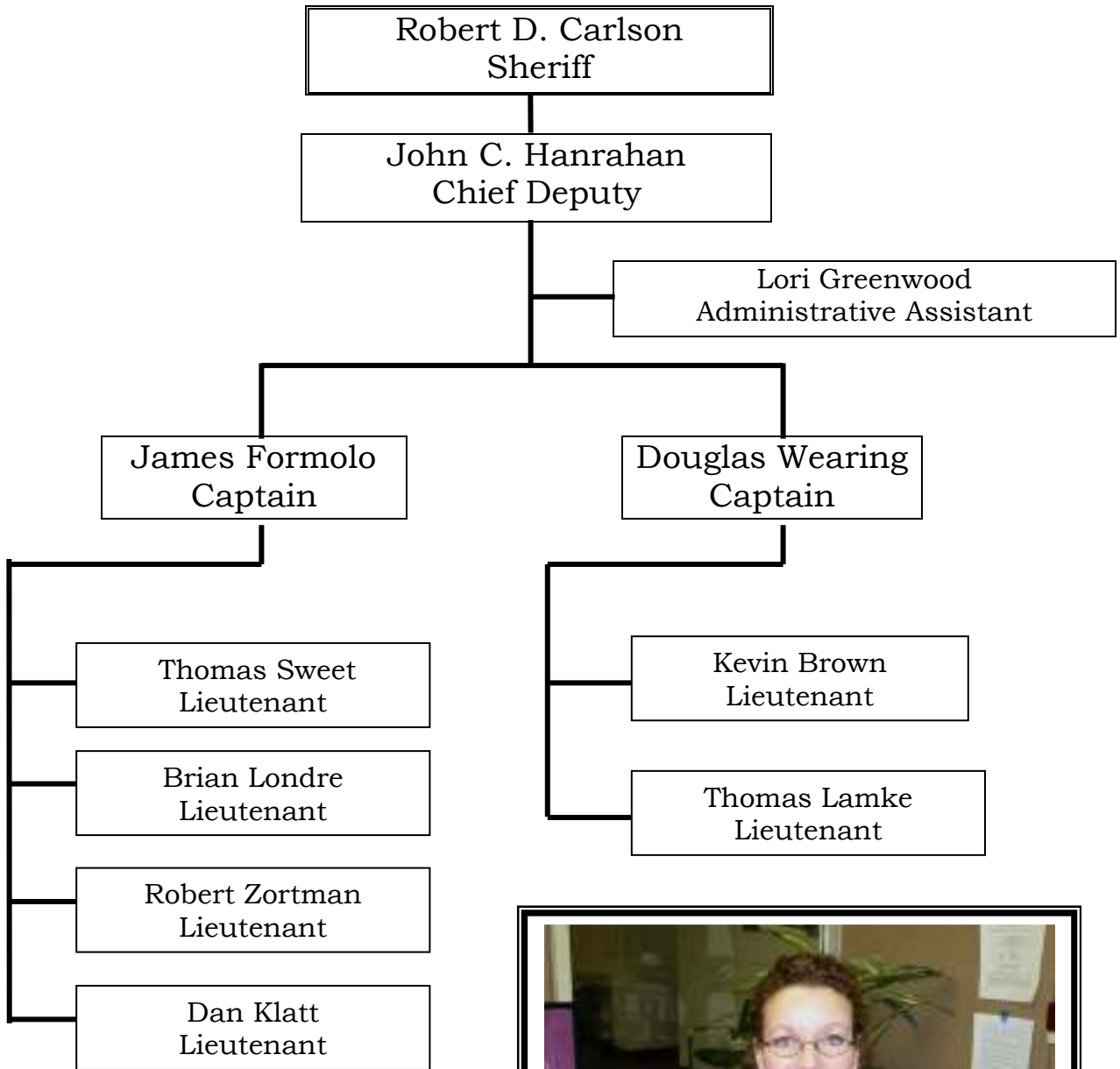
FACING THE CHALLENGE

## Racine County Sheriff's Department

# Mission Statement

**I**n Partnership with the Citizens, and with the cooperation of the communities within Racine County, the mission of the Racine County Sheriff's Department shall be the preservation of public safety, peace and order. This goal shall be met through proper utilization of the available resources in the most efficient manner possible while maintaining the highest levels of professionalism.

## 2009 Administrative Staff



Administrative Assistant Lori Greenwood

The **Sheriff's Administration** is responsible for the management and direction of the entire Department, and ensures that the Department obtains its goals and objectives.

The Sheriff's Department is a large, dynamic organization with ever-growing responsibilities. The Department is composed of many specialized units.

The Department's Administrative Staff provides support services to all operating units within the Department. Support and administrative services include; creating policy and procedure, handling citizen's complaints, accounting, records, training, communications and clerical support.



Weekly Administrative Staff Meeting – Sharing Strategic Information

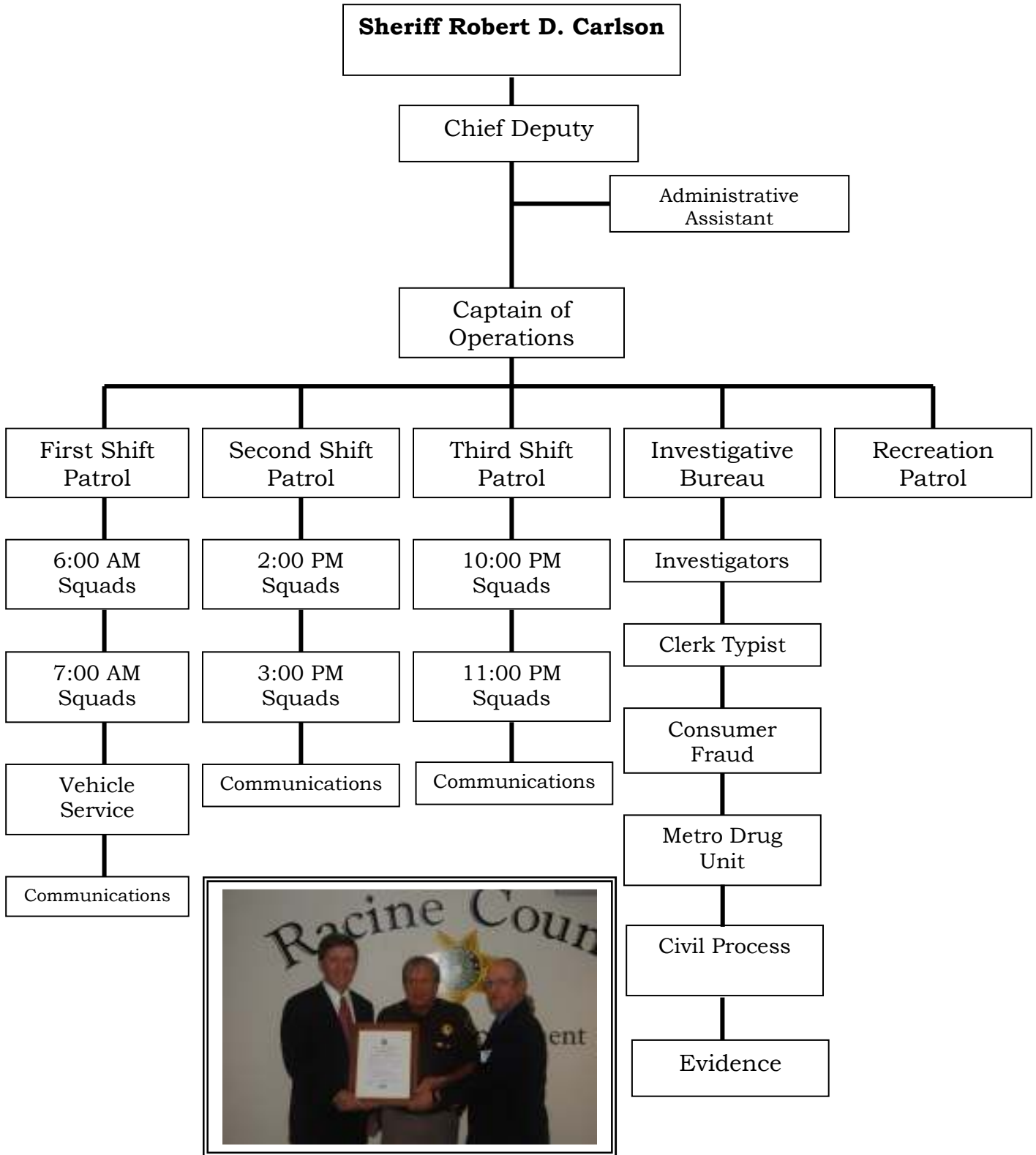


CHIEF DEPUTY JOHN C. HANRAHAN



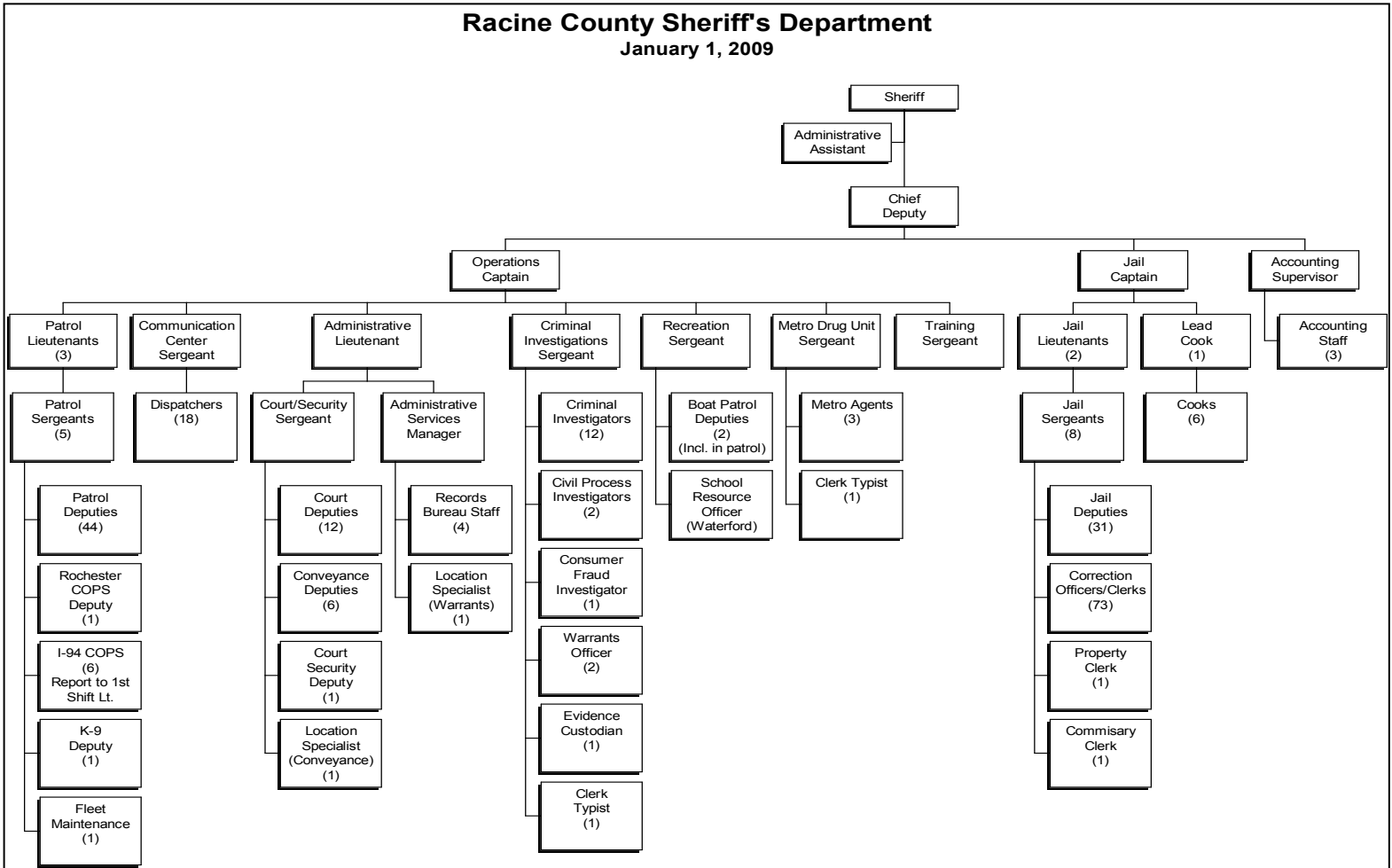
CAPTAIN OF OPERATIONS - JAMES A. FORMOLO

## 2009 Operations Structure

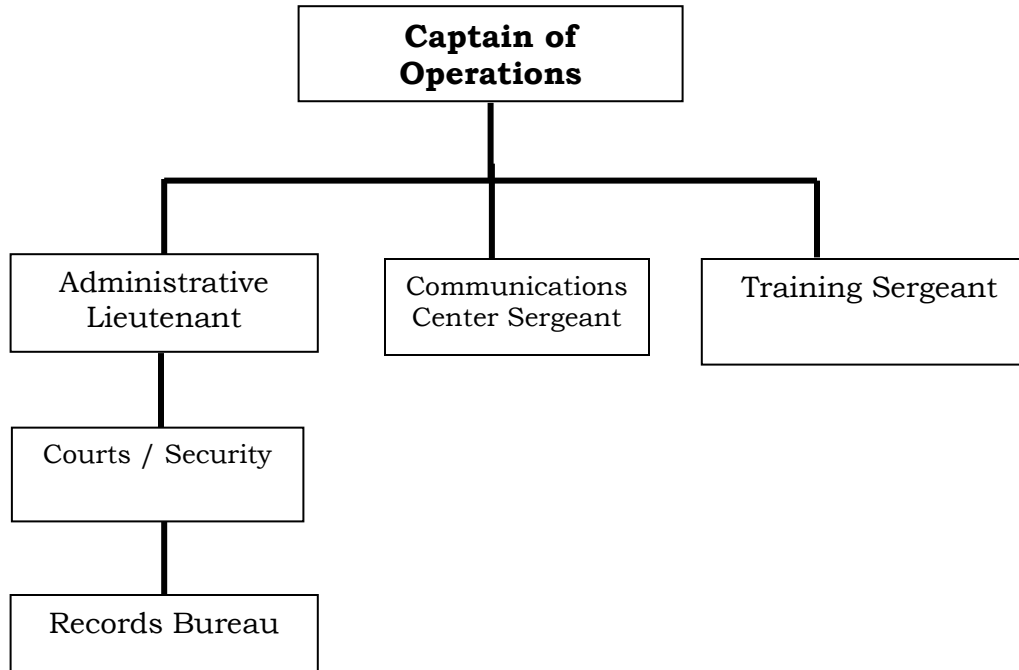


Sheriff Robert D Carlson, Sgt Robert Kacmarcik accepting the Patriot Award on behalf of the Racine County Sheriff's Department

# 2009 Organizational Chart



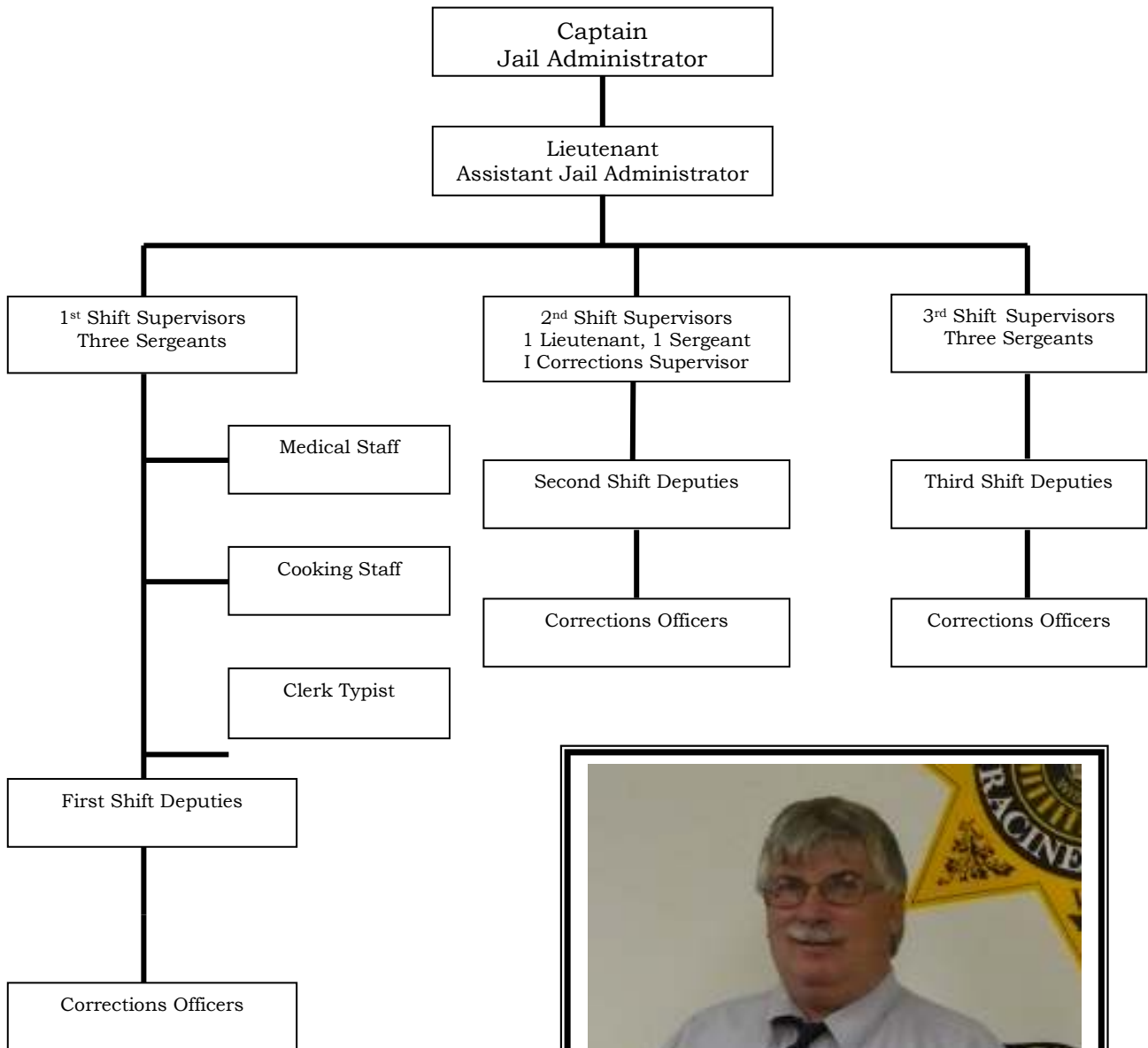
## Administrative Services Structure



Administrative Lieutenant Dan Klatt



# Racine County Jail Staff



Captain Douglas Wearing – Jail Administrator

## **The Racine County Jail**

The Racine County Jail is located at 717 Wisconsin Avenue in downtown Racine. It is part of the Racine County Law Enforcement Center that opened in 1981. At the time the “new” jail opened, inmate capacity numbered 144. Today, after several expansion and double bunking projects, the jail’s capacity is 876 inmates.

Wisconsin State Statute 59.27 requires the Sheriff of each County to “Take the charge and custody of the jail maintained by the County and the persons in the jail, and keep the persons in the jail personally or by a Deputy jailer.”

Racine County employs a combination of sworn Deputy Sheriffs and civilian Correction Officers to satisfy this mandate. Jail support staff includes cooks and clerk typists.

- **31 Deputies**
- **73 Correction Officers**
- **1 Clerk typist**
- **3 Full Time cooks**
- **4 Part Time Cooks**

The Mission of the Racine County Jail is to safely, securely and humanely detain all persons admitted to the facility. To attain this mission, all staff receives professional training in modern corrections practices, and are expected to be in compliance with formal policies, procedures, and rules that guide them in the performance of their duties.

In addition to maintaining a safe and secure facility, the jail is obligated to provide for the medical, religious, and educational needs of its inmates. Religious and educational needs are met through the Racine county Jail Chaplaincy Program.

The Racine County Jail is committed to providing programs that aim to serve inmate’s needs and the needs of the community.

The **Jail Chaplaincy Program** provides a number of services and programs for inmates who request to be involved.

- Chaplaincy programs include;
- Bible Study, including Spanish and Catholic studies
- Alcoholics Anonymous meetings
- One on One mentoring
- GED and Tutoring
- High School
- Life Skills – Basic skills in good living
- Pre-Release Assistance – how to obtain clothing, food etc.
- Self Esteem – Better understanding who you are / who you want to be
- Anger Management – Men & Women
- Communications – learning to express yourself better
- Issues – Women only
- Domestic Violence – Women
- Library Services
- Drug Abuse Counseling
- Worship Services
- Post Release Support @ 262-898-8585



The Chaplaincy Program maintains a web site at:

[www.racinecounty.com/chaplain](http://www.racinecounty.com/chaplain)

Other programs are provided to inmates in addition to those of the Jail Chaplaincy. The jail provides a comprehensive in house **AODA Treatment Program**, started in June of 1998. The AODA Treatment Program has two main components: a 20-day in-jail element and a nine-month post jail aftercare module.

The housing configuration allows up to twenty inmates, both male and female, to receive treatment during the in-house portion. This is an intensive segment administered by certified AODA professionals. It lasts for approximately twenty days and runs from 7:00 AM

until 10:00 PM seven days a week, including holidays.

The aftercare phase is nine months long and is a holistic service integrating housing, employment and other community outreach assistance, as well as continued alcohol and drug counseling. Inmates are admitted to aftercare after successful completion of in-house treatment and staying of their sentences by the sentencing court. If the inmate successfully completes the aftercare phase, the stayed sentence becomes time served.



Inmate Workers Earning Credit Towards Early Release

The jail's **Inmate Worker Program** and **Community Work Service Program** allow approved inmates to earn reductions in their sentences. Inmate Worker participants work in the jail kitchen and laundry, as well as performing janitorial work throughout the jail interior. Community Work Service participants work for non-profit community groups. In each program, the goals are to have the inmates provide useful service to the community and reduce jail bed days.

## Jail Revenues

The Racine County Jail generates revenue from a number of sources, which are detailed in the table below.

<b>Revenue Source</b>	<b>2002</b>	<b>2003</b>	<b>2004</b>	<b>2005</b>	<b>2006</b>	<b>2007</b>	<b>2008</b>	<b>2009</b>
SPO Holds	\$598,543	\$460,960	\$336,240	\$224,138	\$165,258	\$206,752	\$219,900	\$267,630
Comm. Sales	\$362,518	\$363,390	\$354,624	\$210,968	\$175,886	\$127,797	\$145,778	\$144,770
Bed Rentals	\$202,070	\$1,568	\$56	\$0	\$0	\$20,121	\$1,203,083	\$1,224,902
Inmate Phones	\$477,782	\$526,570	\$599,747	\$435,675	\$368,642	\$543,342	\$450,815	\$364,473
Other Municipalities	\$138,245	\$165,184	\$85,525	\$75,583	\$99,015	\$103,161	\$121,172	\$138,919
Huber Law	\$298,782	\$308,946	\$319,702	\$319,008	\$273,640	\$356,668	\$315,177	\$229,502
SS Reimbursement	\$27,600	\$16,400	\$26,200	\$36,400	\$42,333	\$41,600	\$40,600	\$47,600
Dept of Public Instruction Detention Lunch		\$44,980	\$99,250	\$84,920	\$110,150	\$91,564	\$91,316	\$77,395
<b>Totals</b>	<b>\$2,105,540</b>	<b>\$1,887,998</b>	<b>\$1,821,334</b>	<b>\$1,386,692</b>	<b>\$1,234,924</b>	<b>\$1,491,005</b>	<b>\$2,587,841</b>	<b>\$2,495,201</b>

## Jail Population

Persons are admitted to the Racine County Jail for numerous reasons. Some of the causes are:

- Sentenced Inmates ( Huber and General population )
  - Pre Trial detainees
    - State Probation Holds
      - Holds for other Jurisdictions
        - Returned on Writs

The jail population increased significantly during the last decade, and continues in 2009. The average daily population is shown below.

	1997	1998	1999	2000	2001	2002	2003	2004	2005	2006	2007	2008	2009
Jan	513	591	651	614	559	569	620	619	611	661	698	751	766
Feb	565	621	678	619	579	592	629	613	616	673	662	783	777
Mar	580	676	642	601	599	610	634	620	619	683	662	778	794
Apr	562	641	664	607	599	639	634	661	638	643	684	762	801
May	523	645	646	614	592	645	656	665	662	654	725	769	788
June	526	649	648	604	575	646	655	679	710	643	749	775	793
July	515	624	639	616	605	654	659	652	722	688	768	772	806
Aug	541	655	644	632	619	641	660	647	728	707	758	834	792
Sept	578	674	639	610	628	659	655	645	733	720	773	830	816
Oct	561	670	634	589	619	680	682	668	721	715	758	825	815
Nov	534	678	634	565	583	655	675	662	685	709	739	814	773
Dec	524	642	611	535	543	602	636	611	603	694	701	759	762
Average	544	645	644	612	592	633	650	645	671	683	723	788	790

# The Racine County Jail

## Racine County Jail Admissions

1997	1998	1999	2000	2001	2002	2003	2004	2005	2006	2007	2008	2009
8,030	8,644	8,414	8,637	9,799	10,931	10,859	10,680	10,829	11,650	11,624	11,118	10,642

## Average Length of Stay in Days

1997	1998	1999	2000	2001	2002	2003	2004	2005	2006	2007	2008	2009
24.3	26.2	27.5	25.9	24.2	25.1	26	22.6	20.5	21.4	22.7	25.6	26.7

## Bed Days Saved by Program

	2004	2005	2006	2007	2008	2009	TOTAL
<b>AODA Program</b>	7520	7308	7650	7544	7553	7565	45,140
<b>Employment Program</b> - August 2003	5410	5868	6809	7519	6478	7990	40,074
<b>Day Reporting Center</b>	7517	8412	8172	8033	8067	11,006	51,207
<b>Treatment Court</b>				1135	2600	2080	5,815
<b>Community Service</b>					631	1000	1,631
<b>Inmate Workers</b>					3464	6000	9,464
<b>TOTAL</b>	20447	21588	22631	24231	28793	35,641	153,331

In order to accommodate the increased demands on the jail's space, the entire living facility area was double bunked in a renovation project completed in 1998.

The Sheriff's Department has implemented AODA, Children First and Community Work Service programs so that more jail bed days could be saved. The Sheriff and jail management have continued to explore ways to relieve crowding, including the implementation of a Day Reporting Center in early 2001.

In 2006, the County Board approved a jail construction project that included additional dormitory style housing for inmates, a new intake area, a new vehicle sally port and remodeling of the first floor of the existing jail. The addition, increasing the jail's capacity to 876 was completed in the fall of 2007.

**Jail Management Computer Software** was implemented in the jail in October of 2000.

The project has allowed management to more efficiently utilize the jail's most important resource: its Staff.

Because of a number of laws and administrative codes, the jail staff must perform many man-hour-intensive tasks relating to inmate property, money, health care, medication, housing, movement, and so on. The implementation of the software project allows these tasks to be performed more efficiently. The management package also enables jail staff to develop accurate information concerning inmate demographics and population trends. These statistics will enable staff to make informed assessments and projections of how the facility is used, and by whom.

Racine County Jail



## Racine County Sheriff's Department Investigative Bureau

The Racine County Sheriff's Department Investigative Bureau was comprised of 1 Sergeant and 15 Investigators. Two Investigators are assigned to Civil Process and 1 to Consumer Fraud Investigations.

The Investigative Bureau has a number of specialized units staffed by highly trained and skilled Investigators.

- **Sexual Assault**
  - **Child Abuse**
    - **Burglary & Theft**
      - **Arson Investigations**
        - **White Collar & Financial Crimes**
          - **Internet Crimes**
            - **Traffic Investigations**
              - **Consumer Fraud**
                - **Death Investigation**

### 2009 Criminal Investigation Activity Summary

<b>Classification</b>	<b>Total calls for Service</b>	<b>Calls investigated by Bureau</b>
<b>Thefts</b>	<b>700</b>	<b>223</b>
<b>Burglaries</b>	<b>125</b>	<b>92</b>
<b>Sex Offenses</b>	<b>78</b>	<b>74</b>
<b>Physical Assaults</b>	<b>241</b>	<b>33</b>
<b>Fraud</b>	<b>209</b>	<b>188</b>
<b>Robberies</b>	<b>9</b>	<b>6</b>

# Racine County Sheriff's Department Investigative Bureau



Investigations Supervisor - Sergeant James Weidner



Investigators at Work

## Racine County Sheriff's Department Evidence Custodian

The Racine County Sheriff's Department Evidence Custodian, Leslie Hurdis, is responsible for the proper collection, identification, and preservation of evidence collected by Deputies and Investigators.

The Evidence Custodian maintains the 'chain of custody' of evidence that may be sent to the Crime Lab for analysis.

Collection and processing of evidence is a constantly changing field that demands the Department be current in the latest technological procedures. Our Evidence Custodian is also highly involved in learning new processes, and training members of the Department in proper technique.

In the year 2009, 5,743 items of evidence were inventoried !

In 2009, 3,781 items were returned to the rightful owner or disposed of. 47 vehicles were

processed, 466 items were taken to the Crime Lab for analysis.

In addition to evidence of criminal activities, 192 blood samples of potential OWI situations were processed in the always-busy Evidence Division.



Home Burglary

## **Racine County Sheriff's Department Dive Rescue Team**

The Racine County Sheriff's Department Dive Rescue Team has evolved into the Racine County Water Rescue Response Team (RCWRRT). The RCWRRT operates under the authority of Sheriff Robert D. Carlson. RCWRRT members are comprised of Sheriff's Deputies, Fire Department personnel and other law enforcement officers from public safety agencies within Racine County. RCWRRT members include rescue divers, surface rescuers and shore support personnel. At the present time, the RCWRRT has approximately 72 members.

The primary function of the RCWRRT is to make every reasonable attempt to save any person that may be drowning or has disappeared under the surface of any body of water within Racine County.

The RCWRRT schedules intensive practical training for approximately four to five hours per month. All active divers must have a minimum of an advanced certification through the Professional Association of Diving Instructors organization.

The RCWRRT has also obtained specialized equipment to make underwater searches safer and faster. This includes an underwater towable video system, diver to diver underwater communications, and a diver to surface video system. Zodiac boats are staged east and west of I-94 for rapid deployment to any body of water in Racine County.

Additionally, the RCWRRT will make every reasonable effort to recover the body of any person that has been declared a drowning victim in any body of water within Racine County.



Racine County Sheriff Department Divers

Many RCWRRT members have taken advanced courses and are certified in Ice Diving, Ice Rescue, Advanced Open Water, Rescue Diver 1, Rescue Diver 2, Swift Water Rescue, Underwater Investigator, Medical Dive Specialist, Deep Water Diver, Underwater Death Investigator, Wreck Diver, Night Diver, Dive Master, Nitrox Diver, Computer Diver, Technical Diver, Dive Instructors and Dive Equipment Repair Specialist.

# Racine County Sheriff's Department Dive Team

## Proficiency Training 2009

**520 Hours**

### 2009 Calls For Service

**Search For Evidence**

**2**

**Vehicle Retrieval**

**3**

**Buoy Marker Setting**

**1**

**Demonstration**

**3**

**Rescue / Recoveries**

**9**

**Assist Parks / Other Jurisdictions**

**3**

**Remove Underwater Obstructions**

**3**

## Racine County Sheriff's Department Communications Center

The Racine County Communication Center (RCCC) operates under direction and authority of the Sheriff of Racine County to provide reliable and efficient emergency call taking, dispatching services and administrative support for County law enforcement and for municipal law enforcement, fire and emergency medical services for which RCCC has dispatch responsibility. The RCCC is a Public Safety Answering Point for the Emergency 9-1-1 system, as well as for Voice Over Internet Protocol (VoIP) 911 calls, and is the designated wireless 9-1-1 PSAP for *all* mobile 9-1-1 calls throughout the County of Racine. The RCCC currently dispatches emergency services for 15

out of the 25 public safety agencies operating in Racine County.

The Communications Center answers tens of thousands of informational requests each year. Callers requesting information on road closures, weather conditions, public event schedules, fishing and hunting regulations, aviation rules, boating laws, court functions, jail procedures, warrants, traffic laws, civil dispute situations, custody disagreements, and a multitude of other topics, expect and receive answers or a direction to proceed in, each hour of every day.

Racine County Communications Center



Our Communications Center at the Ives Grove location opened on January 12<sup>th</sup>, 2004. Planning for the future, the Communications Center was constructed and equipped to be the central Communications Center for all Law Enforcement and Fire / Rescue agencies in Racine County.

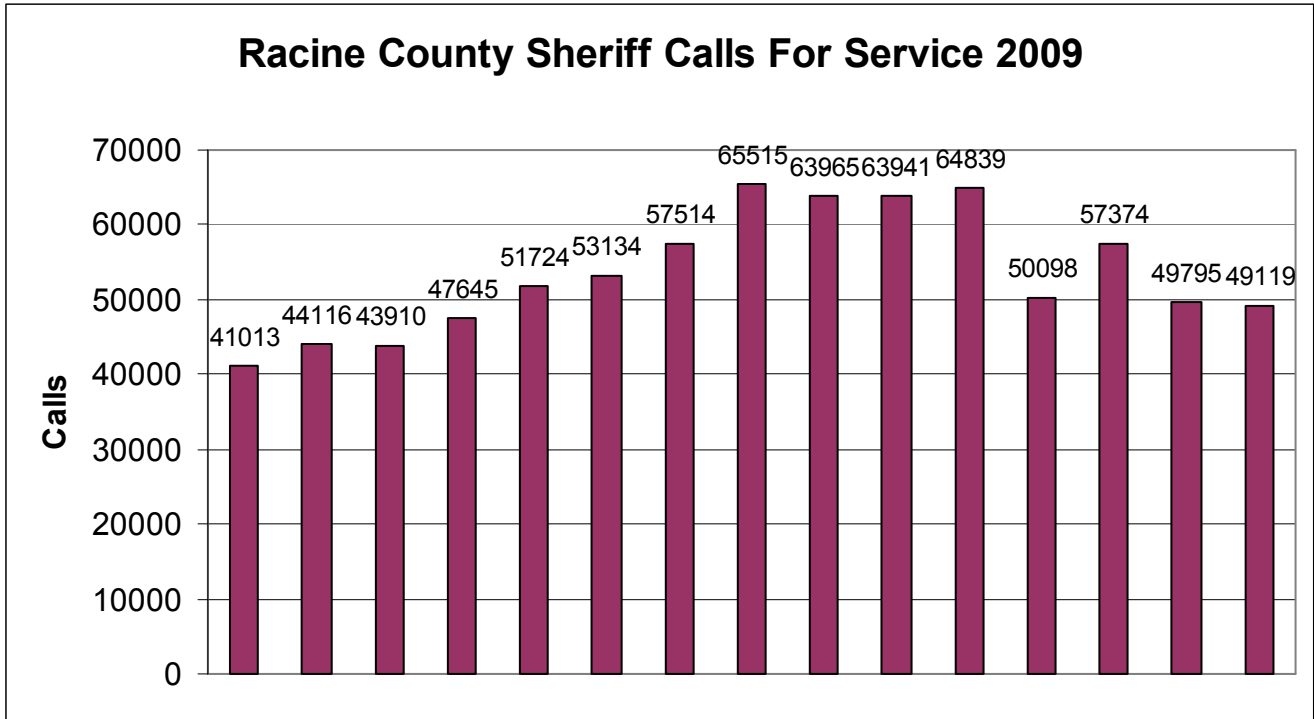
Leading the movement towards complete interoperability, The Sheriff's Department stands ready and able to fill the needs of the decades ahead.

The Racine County Sheriff's Communications Center is precisely that . . . . the Center of Communications, the initial point of contact for Officers and citizens who need and expect a response.

Racine County Communications Center & Patrol Station



# Racine County Sheriff's Department Calls For Service



1995 1996 1997 1998 1999 2000 2001 2002 2003 2004 2005 2006 2007 2008 2009



## Racine County Sheriff's Department Records Bureau



Administrative Services Coordinator – Stephanie Lorenzo

The Records Bureau is responsible for all records generated by patrol, investigative, and jail personnel in the normal course of their duties. These records include incident reports, accident reports, citations, photographs, video tapes, investigative reports, jail records, and any other documents related to these records kept during the normal course of business.

Filing, data entry of pertinent information, and storage are the main functions involved with maintaining the records. Arrest paperwork is collected, processed, and disseminated to the courts and District Attorney's Office as appropriate. The Records Bureau also maintains inactive jail files, fingerprint cards, and mug shots as part of its centralized records and identification functions. Records are warehoused for seven years prior to the destruction process set forth by Racine County. Some records, due to their nature, are

kept past the seven-year period with no possibility of destruction.

Civil Process clerical functions are handled by Records Bureau personnel. This includes data entry, tracking, processing necessary documents, and collecting fees due.

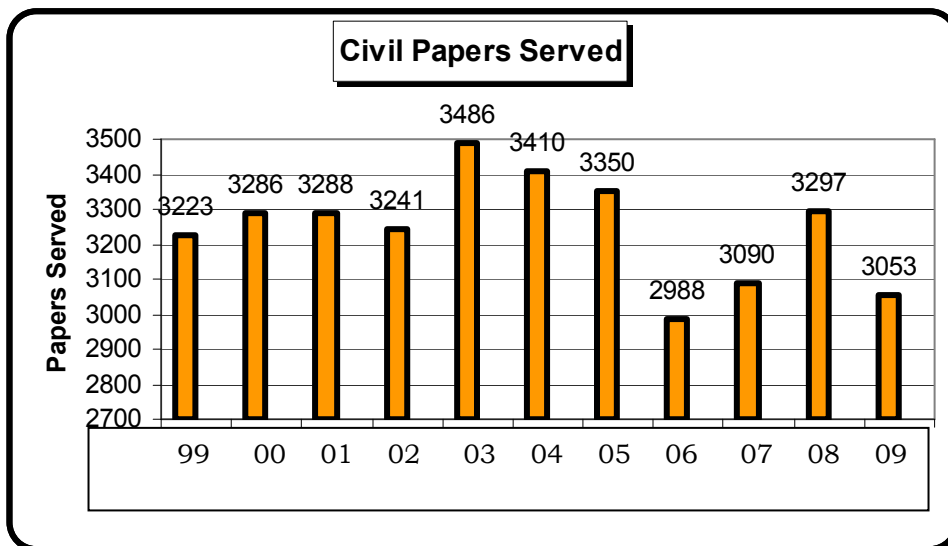
Records clerks perform data entry, fingerprinting and photographing of non-custody defendants, sex offender registrants, juveniles arrested, and applicants and citizens requiring special licenses or certifications. This function utilizes jail management software and is interfaced with the State of Wisconsin Crime Information Bureau for electronic submission of fingerprints.

Records Bureau personnel respond to a wide range of requests for information and records from the general public, news media, attorneys and prosecutors, other law enforcement agencies, courts, and departmental employees. Crime statistics and arrest and accident report information is filed with the proper State and Federal agencies. Criminal record checks and requests filed under WI Open Records Law are date sensitive and are handled as high priorities.

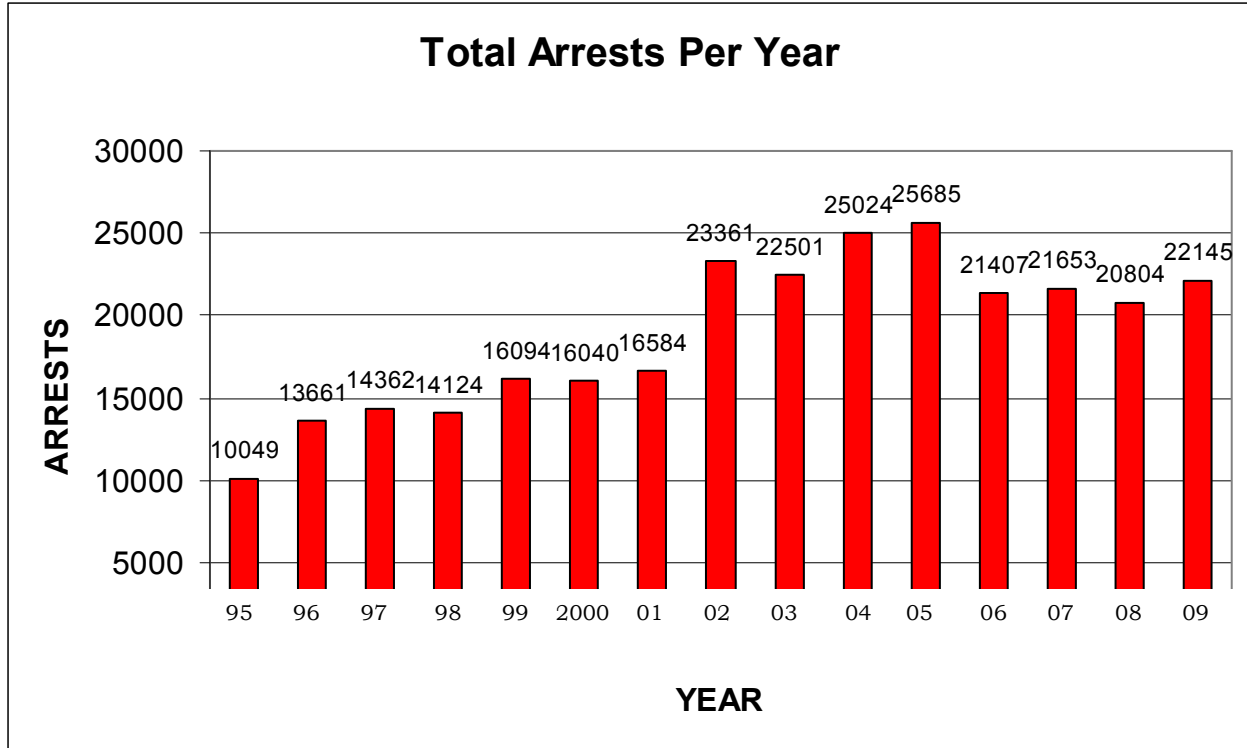
Currently, the Records Bureau staff includes one supervisor and four full time clerks. Office hours are from 8:00 AM until 4:30 PM, Monday through Friday excluding legal holidays.

The Administrative Services Coordinator is also responsible for the position of Warrants Location Specialist. This person tracks, validates, and processes warrants served by deputies of this Department. The Warrants Location Specialist files detainers and coordinates with applicable courts to correct or amend warrant documentation.

Currently, the Administrative Services Coordinator is responsible for software application administration for dispatch and records management. This includes troubleshooting, training, drafting and implementation of procedures, and quality control for data entry functions. The Supervisor interacts with other networked agencies for software procedures and implementation.



## Racine County Sheriff's Department Total Arrests per Year



Dispatch Technician Sue Conley



## **Racine County Sheriff's Department Patrol Division**

In any Law Enforcement operation, whether a Sheriff's Department or Municipal Police Department, the backbone of the Department consists of the uniformed Patrol Division.

The uniformed Patrol Division of the Racine County Sheriff's Department currently has 52 Deputies and Supervisors who are responsible for Patrol activities in Racine County. They are supported by 18 civilian Dispatch Technicians.

The Sheriff's Dept. Patrol Division is the primary patrol operation for many of the Town's and Village's in Racine

County, and has shared patrol responsibilities in those jurisdictions with their own full or part-time patrol operation.

The Patrol Division is supported and assisted by the Criminal Investigations Bureau, Metro Drug Unit, Racine County Water Safety Patrol and the Sheriff's K-9 Unit.

The Sheriff's Department also provides contractual services for the Village of Union Grove, the Village of Waterford, the Village of Elmwood Park, the Town of Dover, the Town of Raymond, the Town of Rochester and the Village of Rochester.



Vehicle Service Technician - Mark Ruggaber at the Patrol Station.

## Highway Safety and the Sheriff's Department



Deputy Jonathan Eckblad

### Racine County Traffic Fatalities

2001	2002	2003	2004	2005	2006	2007	2008	2009
<b>22</b>	<b>22</b>	<b>18</b>	<b>20</b>	<b>26</b>	<b>21</b>	<b>17</b>	<b>20</b>	<b>7</b>

Motorist's disregard for traffic laws contributes directly to injury and fatal accidents. The Racine County Sheriff's Department has taken an aggressive position in efforts to make the roadways in Racine County a safer place to operate motor vehicles.

In 2009, Wisconsin Department of Transportation awarded a total of \$257,070 for 3 safety programs.

The Sheriff's Department participated in the I-94 construction traffic mitigation program, youth alcohol enforcement and alcohol sales compliance program, and the alcohol enforcement program in 2009.

## 2009 I-94 Corridor C.O.P.S. Activity Summary

Speeding Citations	5,716
OWI Arrests	71
Other traffic Citations	735

Drivers license violations	1,532
Registration violations	1,275
Restraint violations	693
Open intox /MV	60
Misd/Ord. Non traffic arrests	735

Felony drug (not warrant)	35
Misd drug (not warrant)	127
Warrants/Commitments	432

Drugs seized:

THC	478.9 grams
Cocaine	4.3 grams
Schedule II, IV, V Drugs	36 tabs

**2009 citations/arrests:                    11,019**

Cash seized                    \$848.00

The Racine County Sheriff's Department has created the I-94 Corridor Patrol. Officers aggressively patrol the Interstate as well as property locations within one mile of I-94 in efforts to make the roadways and businesses in Racine County a safer place to operate motor vehicles and conduct commercial operations.

The operation is in its seventh year of operation, and has made a significant impact on traffic safety in Racine County, reducing serious injury accidents from non corridor patrol years.



I-94 Corridor Deputies Drewitz & Thompson

## 2002-2009 I-94 Corridor Activity Summary

Speed	2002-2009	44,065
OWI	2002-2009	550
*Other traffic	2002-2009	7,144

\*Other traffic includes: FTC, U&I, unsafe lane deviation fail to signal, TFC, equipment, FOS, IP, overweight, LOC, reckless driving, racing, parking, window tint.)

Drivers license	2003-2009	8,372
Registration	2003-2009	8,502
Restraint	2003-2009	2,415
Open intoxic/MV	2003-2009	499

Misd/Ord. Non traffic arrests **excluding warrants or commitments**: 1220 for alcohol, UA, furnishing to UA, trespassing, PDP, theft, littering, truancy, fireworks, DC, battery, bail jump, joy riding, curfew, violation court order, stolen property, animal violations and shoplifting

Felony drug (not warrant)	230
Resist/obstruct	395
CCW/weapons	172
Poss of THC (misd/ord)	590
Poss of cocaine (misd)	38
Warrants/Commitments	2,976
Recovered stolen vehicles	19
Recovered stolen plates	22
Recovered stolen firearm	3

**Drugs seized:**

THC	31,716.5 grams or 69.92 pounds
Heroin	156.1 grams or .3 pounds
Cocaine	27,329.8 grams or 60.25 pounds
Other drugs	463.1 grams or 1.25 pounds of Ecstasy, 955 tabs/pills of various types of controlled pills/schedule II and schedule IV, 46.2 grams Psilocybin

**Total amount of seized drugs: 131.42 pounds**

**2002-2009 citations/arrests: 76,713**

**Cash seized                    \$513,944**

## The Robert L. Rohner Training Center

The Robert L. Rohner Training Center is a joint venture between the FBI, the Racine County Sheriff's Department, and WE Energies. Discussions began during 2003/2004 culminating in a financial commitment by the FBI and WE Energies donating land under the terms of a zero-cost lease agreement. The FBI contributed approximately \$1.5 million for the construction of a building, grounds improvements, and a range house to serve the training needs of the FBI, the Racine County Sheriff's Department, and other local police agencies. WE Energies contributed approximately 25 acres of land along with enough clean fill to erect the existing berms on the north end of the range property. The training center is also available to other Racine County law enforcement agencies & Gateway Technical College.

The main building on the training center grounds features traditional classroom space on the main level along with bathrooms, showers, and a locker room. The classroom is equipped with audiovisual technology to accommodate various media formats for training and presentations. The lower level contains additional classroom space with a well-cushioned floor and open space for use in dynamic training. The building is climate-controlled year around.

The training center contains both a pistol range and a rifle range to accommodate the different types of weapons systems typically in use by law enforcement. The pistol range is equipped with a range tower that provides a vantage point for observation and it also serves as a control center for the fully automated target system. The architectural design of the training center along with the incorporated technologies ensure that Racine County Law Enforcement training needs are met well into the future.

Robert L Rohner Training Center



## Racine County Sheriff K 9

In 1999, the Racine County Sheriff's Department began its first Canine unit. With the generous support of numerous businesses and people, a capital goal was reached. With participation from the Racine County Deputy Sheriff's Protective Association a handler was chosen.

Deputy Kyle Poelmann was partnered with K 9 DAX. They trained intensively for five weeks before returning to Racine and active duty. Due to the onset of a serious health condition, DAX retired on April 20, 2006. DAX passed away on July 10, 2006.

On June 5<sup>th</sup>, 2005, Deputy David Coughlin, a 16-year Department veteran, was selected to be the next K 9 Officer. Deputy Coughlin has been

promoted and replaced by Deputy Jeff Scherer.

Deputy Scherer was partnered with Gingiss, a Belgian Malinois. Gingiss is a dual purpose K 9, trained in narcotics detection as well as tracking, building and area searches, as well as searching for articles and evidence.

Since beginning their duty, Deputy Scherer and Gingiss have made many criminal and narcotics arrests.

K 9 Deputy Jeff Scherer



## Racine County Sheriff Patrol Division Statistics

	2003	2004	2005	2006	2007	2008	2009
Total Miles Driven:	1,235,802	1,152,091	1,129,063	809,468	1,112,775	725,033	653,420
Total Hours Worked:	84,197	84,988	82,897	79,258	77,740	70,216	67,750

### Complaint Activity:

Complaints Assigned:	17,414	19,368	17,948	17,852	17,139	14,619	13,704
Deputy Originated:	8,975	9,025	8,235	7,968	7,925	6,295	6,974
Complaint Follow Up	24,684	23,519	20,436	18,321	17,177	14,318	13,719
Complaints Assisted	6,198	6,392	6,294	5,957	5,163	4,509	3,943
<b>Total Complaints</b>	<b>57,271</b>	<b>58,304</b>	<b>52,913</b>	<b>50,098</b>	<b>47,404</b>	<b>39,741</b>	<b>38,340</b>

### Citizen Contacts

Written Warnings	7,467	7,636	6,708	5,060	4,368	4,118	3,868
Arrest Warrants	1,501	1,327	1,679	1,489	1,090	1,143	1,047

### Arrest Activity

Speeding Citations	7,865	10,356	9,874	7,961	8,301	5,519	7,746
Other Traffic Violations	8,457	8,700	9,606	7,074	6,461	7,258	7,653
OWI	437	557	568	536	445	332	302
Citations from Crashes	1,230	611	591	468	540	505	403
Parking	1,514	1,264	1424	1,367	1337	1,679	1,417
Felonies	162	162	155	192	187	159	123
Misdemeanor Arrests	851	999	922	979	846	717	662
Ordinance Arrests	915	793	865	778	791	770	799
<b>TOTAL ARRESTS</b>	<b>21,431</b>	<b>23,442</b>	<b>24,005</b>	<b>19,355</b>	<b>18,908</b>	<b>16,939</b>	<b>19,105</b>

## Racine County Sheriff's Department Metro Drug Unit

Three Investigators, one supervising Sergeant, and a part time Secretary currently staff the Racine County Metro Drug Unit. All members of the METRO Drug Unit are Sheriff Department personnel.

The Unit was created to provide a coordinated and comprehensive effort to investigate and arrest those who engage in the trafficking of illegal drugs within Racine County. The Unit works closely with the FBI, IRS, DEA and the Federal Prosecutors Office, as well as other

State and local Law Enforcement agencies such as SEADOG, a 5 county information and intelligence sharing cooperative.

During 2009, there were 769 arrests made for various drug charges in Racine County. Of those arrested, 87 are juveniles. There were 366 Felony charges, 295 Misdemeanors, and 21 Ordinance violations. Metro Drug also executed 39 search warrants during 2009.

### 2009 Metro Drug Activity

Substance	Quantity	Street Value in US Dollars
<u>Aderrall</u>	31 tbls	155
<u>Alprazolam</u>	120 tbls	600
Cocaine	5498.7 grms	549,870
Crack Cocaine	434 grms	30,380
Heroin	272.7 grms	54,540
<u>Hydrocodone</u>	14 TBLS	70
Lorzapam	3 tbls	15
Marijuana – THC	17,185.5 grms	171,855
Marijuana Plants	57	57,000
Xanax	216 tbls	1080
Oxycontin	10 tbls	50
Oxycodone	159 tbls	795
Misc Tablets	132 tbls	660
<b><u>Total</u></b>		<b>\$867,070.00</b>

## Metro Drug Unit

**2005 Felony Charges**

**313**

**2006 Felony Charges**

**457**

**2007 Felony Charges**

**406**

**2008 Felony Charges**

**250**

**2009 Felony Charges**

**366**

**2005 Search Warrants**

**48**

**2006 Search Warrants**

**16**

**2007 Search Warrants**

**51**

**2008 Search Warrants**

**48**

**2009 Search Warrants**

**39**

## Racine County Sheriff's Department Water Safety Patrol



The Racine County Sheriff's Department continues to operate the Water Safety Patrol on Lake Michigan and on inland lakes and rivers throughout Racine County. The Water Safety Patrol operates from April 1<sup>st</sup> until about the second week of November. During the summer months, Water Safety Patrol Deputies are assisted by approximately 6 college student summer employees.

The Water Safety Patrol continues to be partially funded by the Department of Natural Resources. Annually, up to 17% of the costs of operating the Water Safety Patrol are reimbursed to Racine County.

The Racine County Sheriff's Water Safety Patrol responds to assist boaters for a variety of incidents, including accidents, engine failures, and rescue as well as enforcement activities.

# Racine County Sheriff's Department Water Safety Patrol

## Calls for Service 2009

Assist Other Jurisdiction	<b>15</b>
Boat Accident	<b>3</b>
Fuel Spill	<b>1</b>
Hazard to Navigation	<b>63</b>
Boating Violations	<b>22</b>
Boat Capsized	<b>1</b>
Vessel in Distress	<b>48</b>
Boat Taking on Water	<b>2</b>
<b>TOTAL CALLS FOR SERVICE</b>	<b>155</b>



Felony Stop – Stolen Van

### Expenses

	2003	2004	2005	2006	2007	2008	2009
Personnel Costs	\$19,627,306	<b>\$21,181,290</b>	<b>\$21,439,732</b>	<b>\$22,133,156</b>	<b>\$22,237,493</b>	<b>\$22,505,974</b>	<b>\$21,278,336</b>
Operating Expenses	\$4,604,675	<b>\$3,920,810</b>	<b>\$4,005,205</b>	<b>\$3,938,628</b>	<b>\$3,085,639</b>	<b>\$3,519,380</b>	<b>\$3,818,866</b>
Total Expenses	\$24,231,981	<b>\$25,102,100</b>	<b>\$25,444,937</b>	<b>\$26,071,784</b>	<b>\$25,323,132</b>	<b>\$26,025,354</b>	<b>\$25,097,202</b>

### Revenues

General Gov Revenues	\$1,749,162	<b>\$1,382,195</b>	\$1,516,421	\$1,029,791	\$828,352	\$694,977	\$1,143,812
Charges for Service	\$1,514,813	<b>\$1,712,371</b>	\$1,674,098	\$1,652,191	\$1,526,789	<b>\$2,749,539</b>	\$2,528,647
Other Revenue	\$671,626	<b>\$728,234</b>	\$650,893	\$806,917	\$562,696	<b>\$500,671</b>	\$728,404
<b>Total Revenues</b>	<b>\$3,935,601</b>	<b>\$3,822,800</b>	<b>\$3,841,482</b>	<b>\$3,488,899</b>	<b>\$2,917,837</b>	<b>\$3,945,187</b>	<b>\$4,400,863</b>
Tax Levy	\$20,296,380	<b>\$21,279,300</b>	<b>\$21,603,455</b>	<b>\$22,528,885</b>	<b>\$22,405,295</b>	<b>\$22,080,167</b>	<b>\$20,696,339</b>



Payroll Technician – Tammy Ruggaber.

## Acknowledgements

It was with the cooperation of many that this report has come to fruition.

This report represents another year of the Racine County Sheriff's Department history, progress and direction. We are moving forward . . . . .

Sincerely



Robert D. Carlson  
Sheriff



PIONEERING INTEROPERABILITY THROUGHOUT SOUTHEASTERN WISCONSIN